



CENTENNIAL
A I R P O R T

Monthly Noise Report

April, 2015

Centennial Airport

Arapahoe County Public Airport Authority

1 TABLE OF CONTENTS

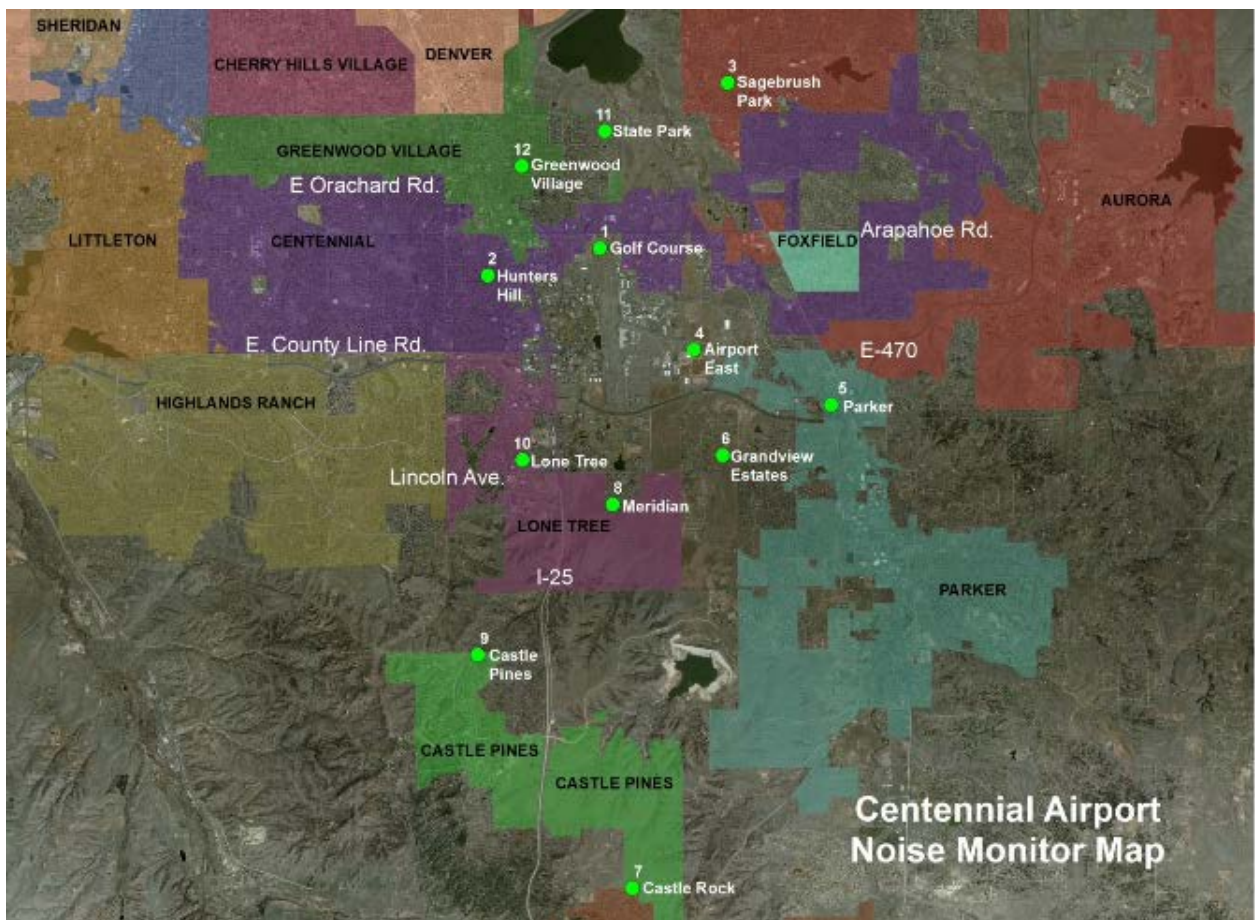
2	About APA's Noise Monitoring Program	2
3	About WebTrak™	3
4	April 2015 Noise Complaints.....	4
5	Complaint Map	7
6	Runway Usage Statistics	9
7	Radar Track Density Map	10
8	Noise Monitor Reports.....	11
9	Notes and Disclaimer	12

Overview

2 ABOUT APA'S NOISE MONITORING PROGRAM

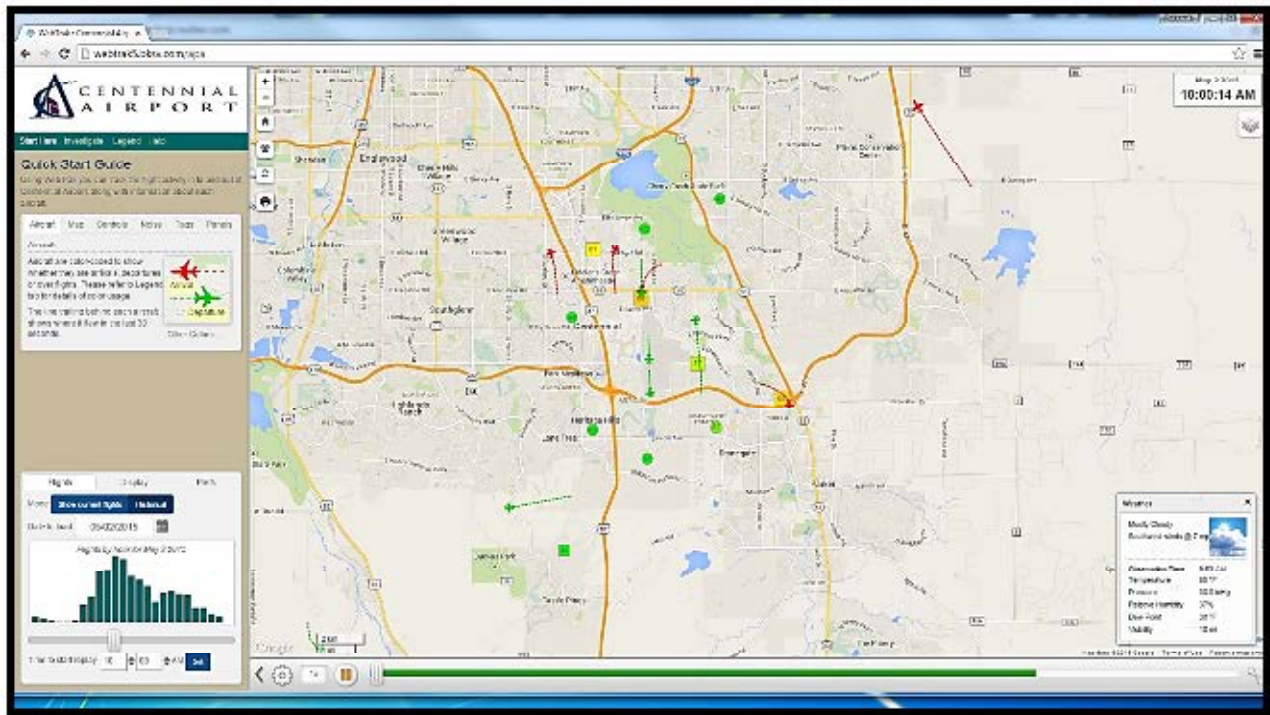
Centennial Airport's (KAPA) Noise and Operations Monitoring System (ANOMS) is a new state of the art system that enables the Arapahoe County Public Airport Authority to monitor and better understand aircraft noise in the vicinity of Centennial Airport. This system is comprised of 12 fixed noise monitoring terminals in the community, as well as 2 portable monitors that are available for short term monitoring anywhere in the community.

ANOMS also has a great public interface known as WebTrak which you can visit at www.bksv.com/apa. This allows the public to see a basic view of aircraft operations in the area along with noise event levels. This is the public facing version of a very complex system that Airport staff members can use to conduct very detailed and complex analysis of noise and operations in and around the airport.



3 ABOUT WEBTRAK™

As part of an ongoing program, Centennial Airport now offers an online tracking system for the movement of flights and air traffic patterns within the Denver Metro area. **WebTrak** Flight Tracking and Noise Information System allows concerned individuals to research data about flights to and from Centennial Airport, Denver International Airport, Rocky Mountain Metropolitan Airport, Front Range Airport and Buckley Air Force Base , as well as any transitional air traffic through the region.



How to participate

The general public may use **WebTrak** to investigate a noise or flight that occurred near their location. The system also simplifies the process of filing a noise complaint, offering an easy, online option for residents to register concerns regarding noise levels at the following web address:

APA WebTrak: <http://webtrak.bksv.com/apa>

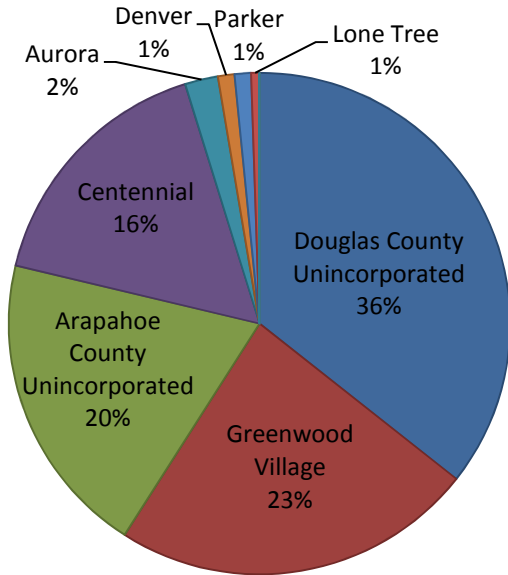
In addition, noise complaints can also be submitted on our noise hotline:

APA Noise Hotline:
303-790-4709

4 APRIL 2015 NOISE COMPLAINTS

As of April 30, 2015 Year to Date, Centennial Airport received 895 Complaints from 89 Households. For the month of April, Centennial Airport received 188 Complaints from 34 Households.

2015, April Complaints per Municipality

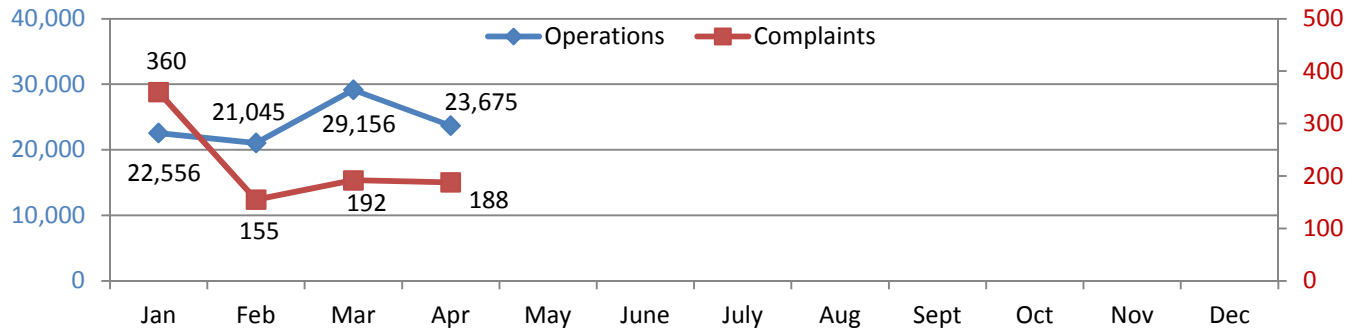


2015 - April Noise Complaints		
Municipality	Complaints	Households
Douglas County Unincorporated	67	5
Greenwood Village	44	8
Arapahoe County Unincorporated	37	10
Centennial	31	4
Aurora	4	3
Denver	2	1
Parker	2	2
Lone Tree	1	1
Castle Pines	0	0
Castle Rock	0	0
Highlands Ranch	0	0
Cherry Hills Village	0	0
Total	188	34

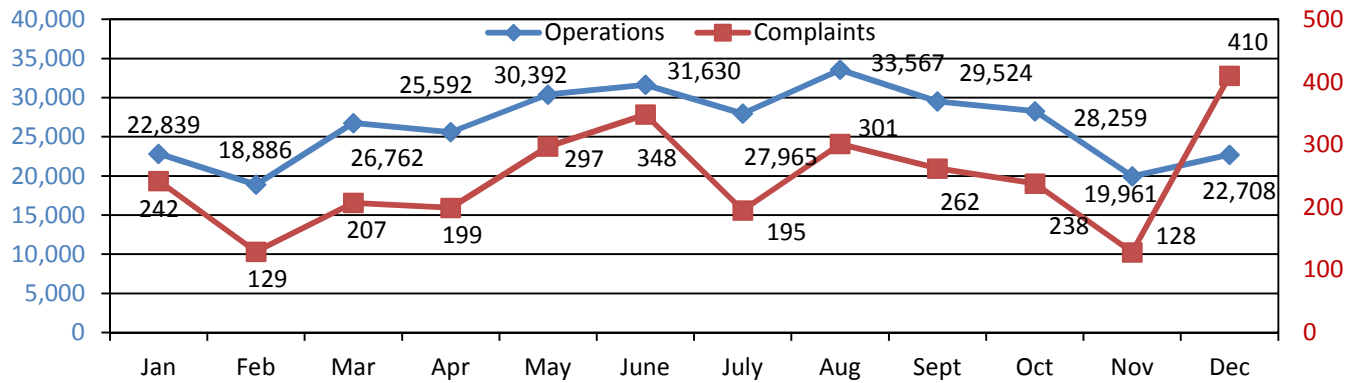
Month Comparison: 2015 Noise Complaints Daytime vs. Nighttime

Time Complaint Received	Jan	Feb	Mar	Apr	May	Jun	Jul	Aug	Sept	Oct	Nov	Dec	2015 YTD
Day Hours (6:00 am - 9:59pm)	319	137	151	151	0	0	0	0	0	0	0	0	758
Night Hours (10:00 pm - 5:59 am)	41	18	41	37	0	0	0	0	0	0	0	0	137
TOTAL	360	155	192	188	0	0	0	0	0	0	0	0	895

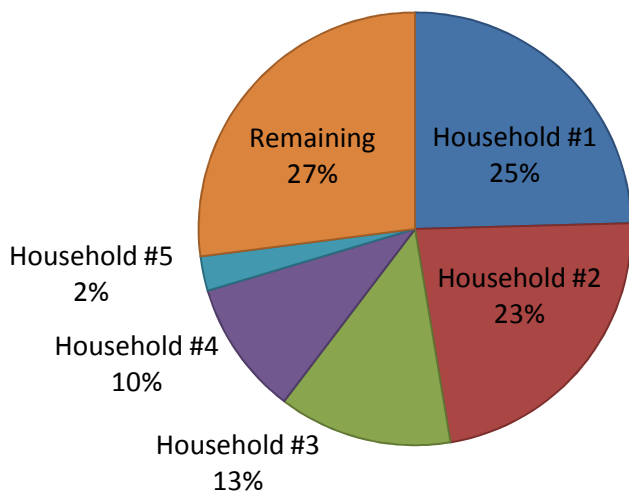
2015 YTD



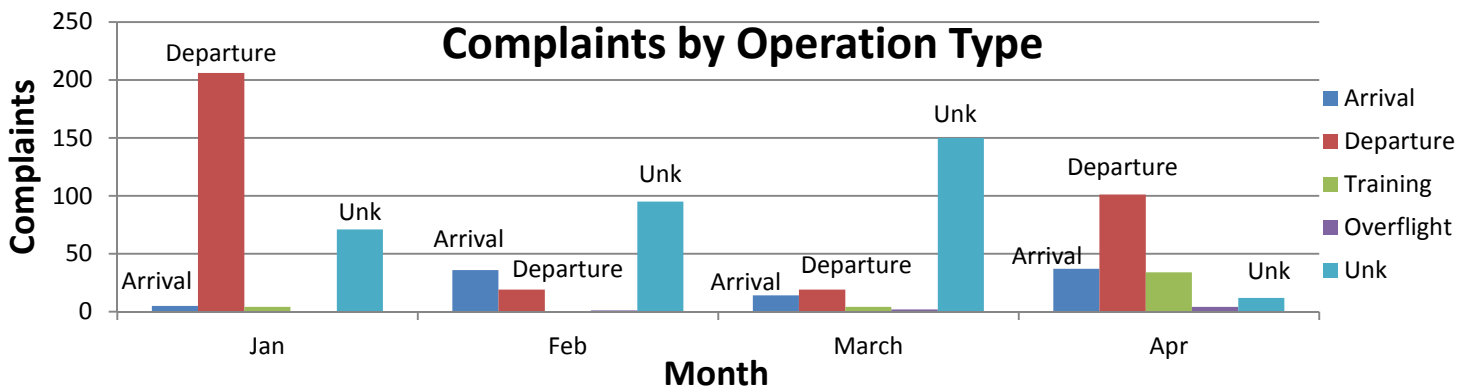
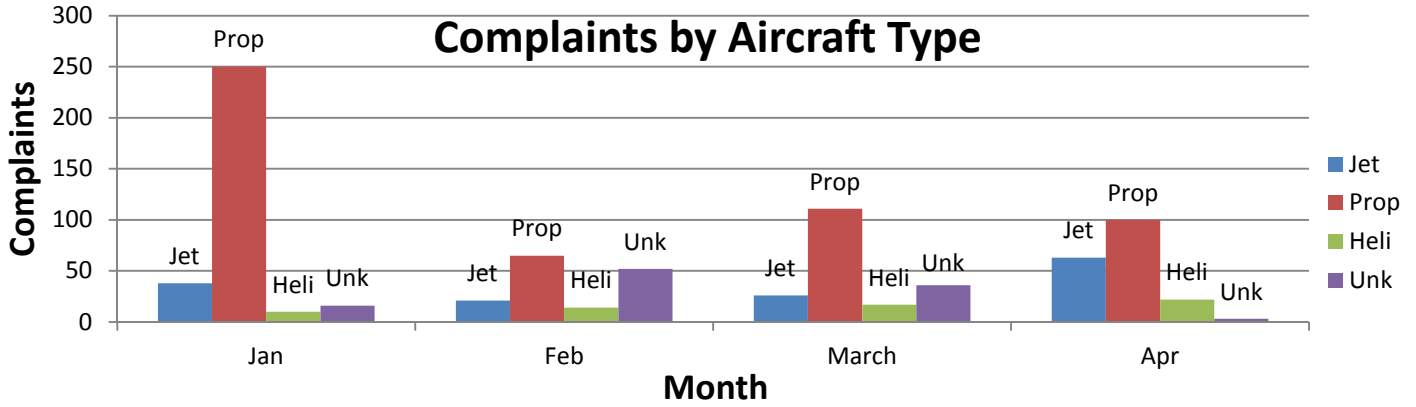
2014



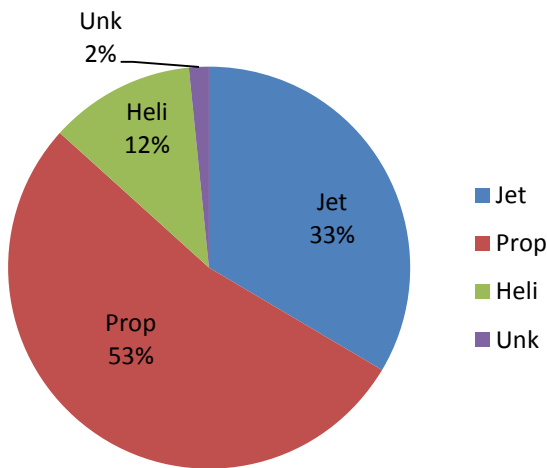
April, 2015 YTD Top 5 Household Complaints



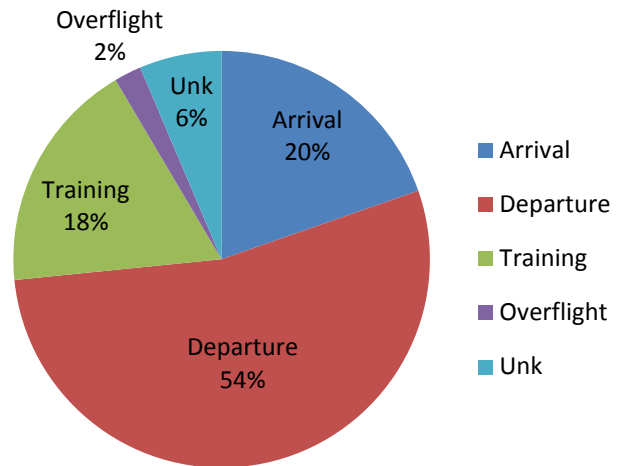
April, 2015 YTD Top 5 Household Complaints		
Household	Complaints	Households
Household #1	220	Centennial
Household #2	204	Unincorporated Douglas County
Household #3	116	Greenwood Village
Household #4	90	Centennial
Household #5	23	Lone Tree
Remaining	242	
Total	895	



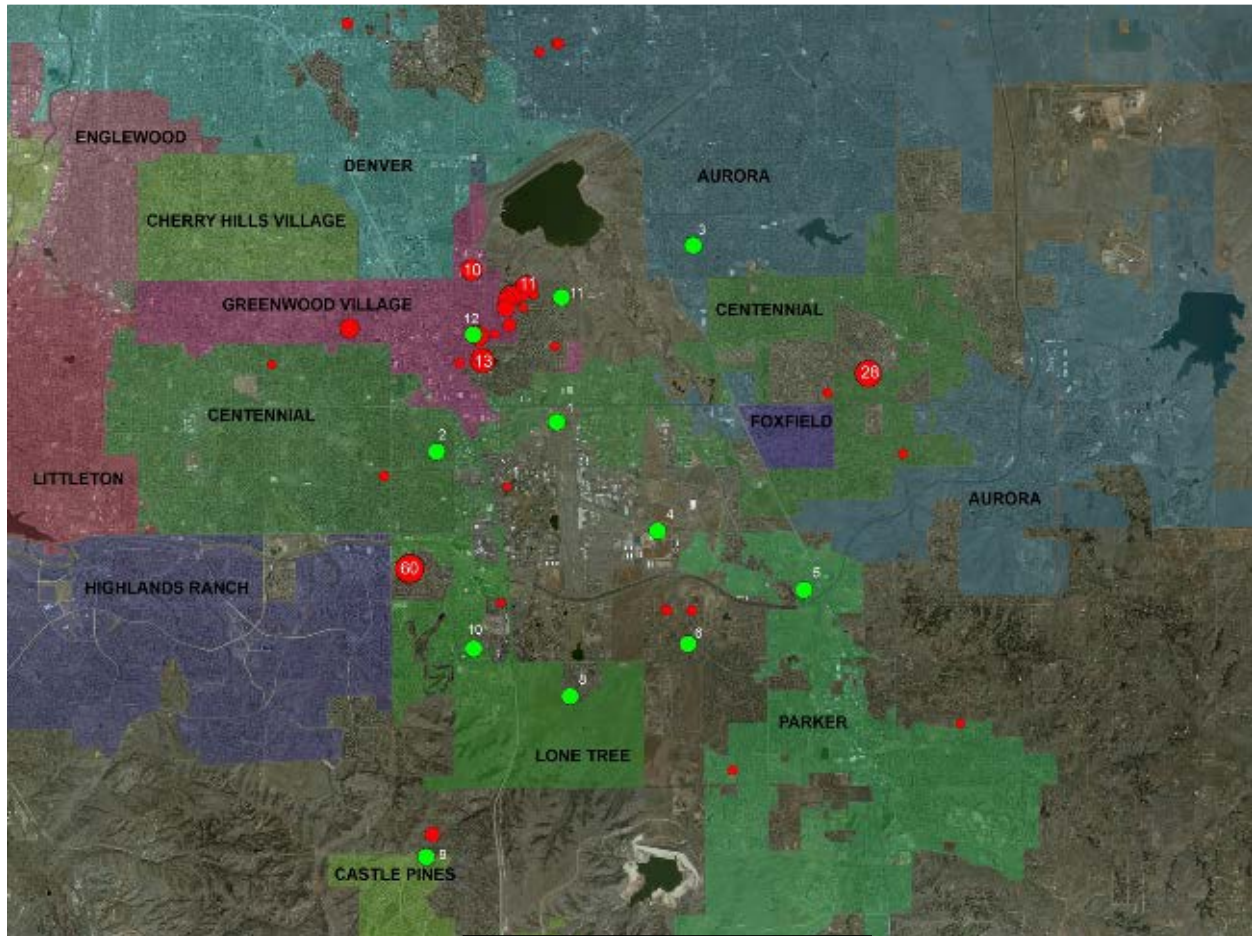
April, 2015 Complaints by Aircraft Type



April, 2015 Complaints by Operation Type



5 COMPLAINT MAP



MAP LEGEND:

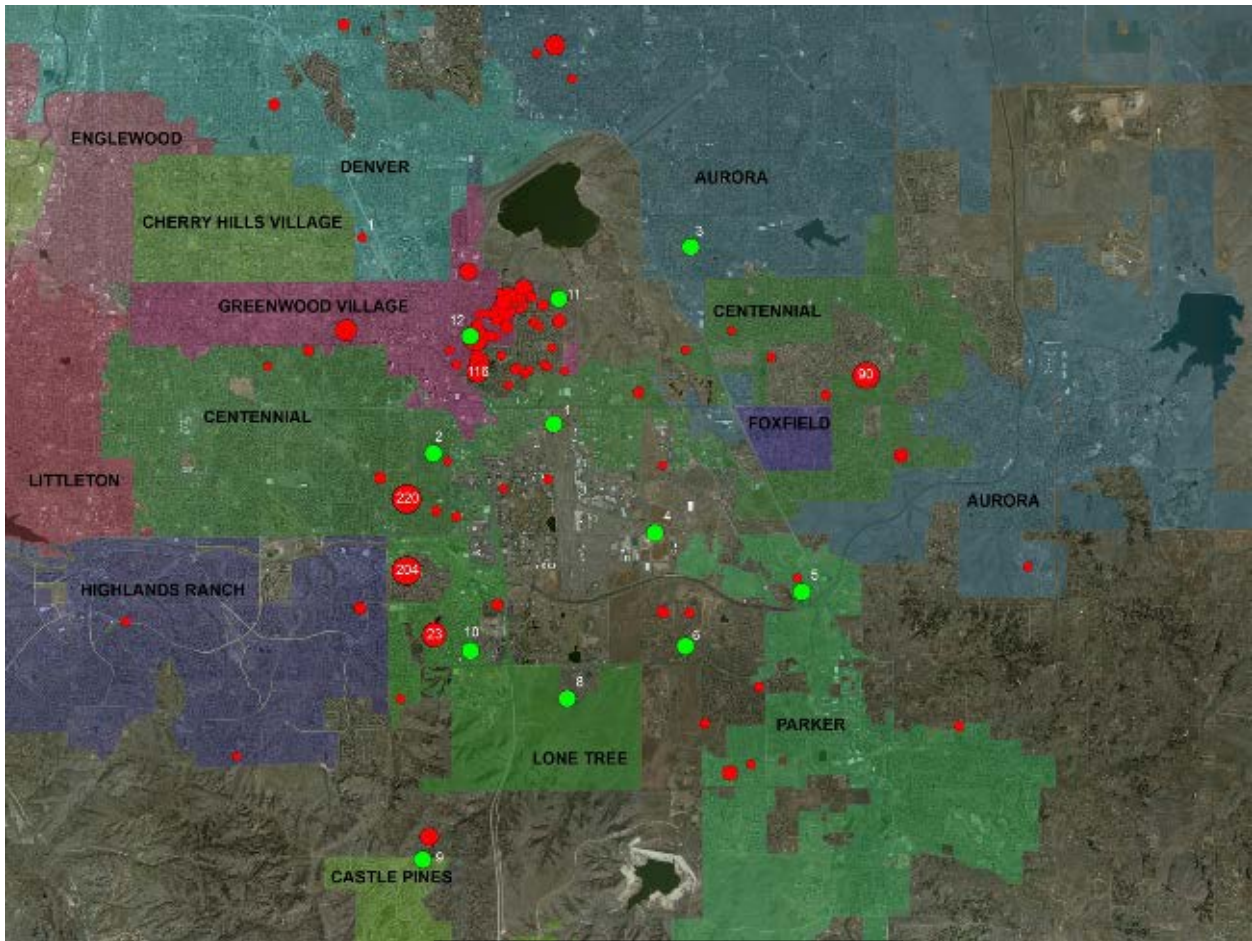
April, 2015 Complaints

Green = Noise Monitor Locations

Red = Household Complaint Locations.

*Larger dots equate to more complaints for that particular household

*Current zoom level shows all complaints for the month of April, 2015



April, 2015 YTD Complaints

MAP LEGEND:

Green = Noise Monitor Locations

Red = Household Complaint Locations.

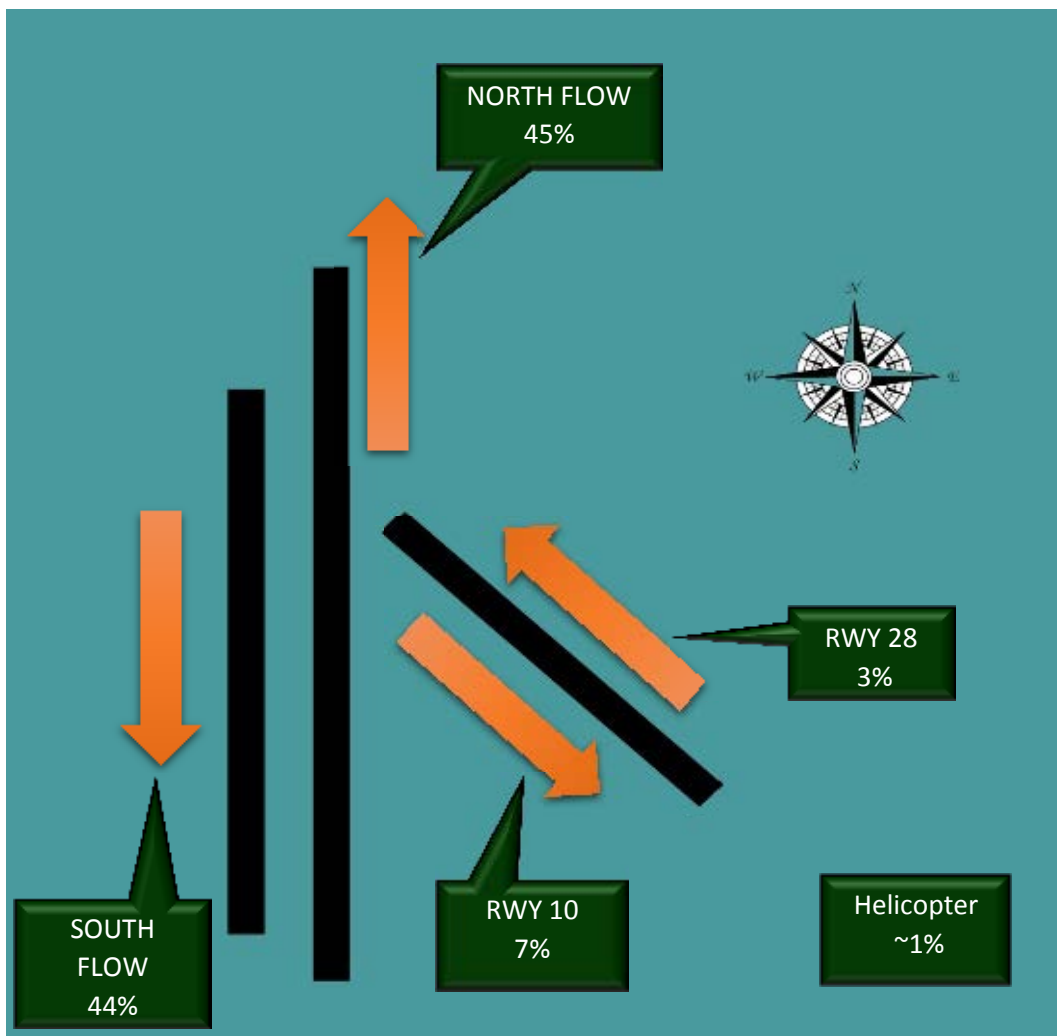
*Larger dots equate to more complaints for that particular household

*Current zoom level shows all complaints for the month of April, 2015

6 RUNWAY USAGE STATISTICS

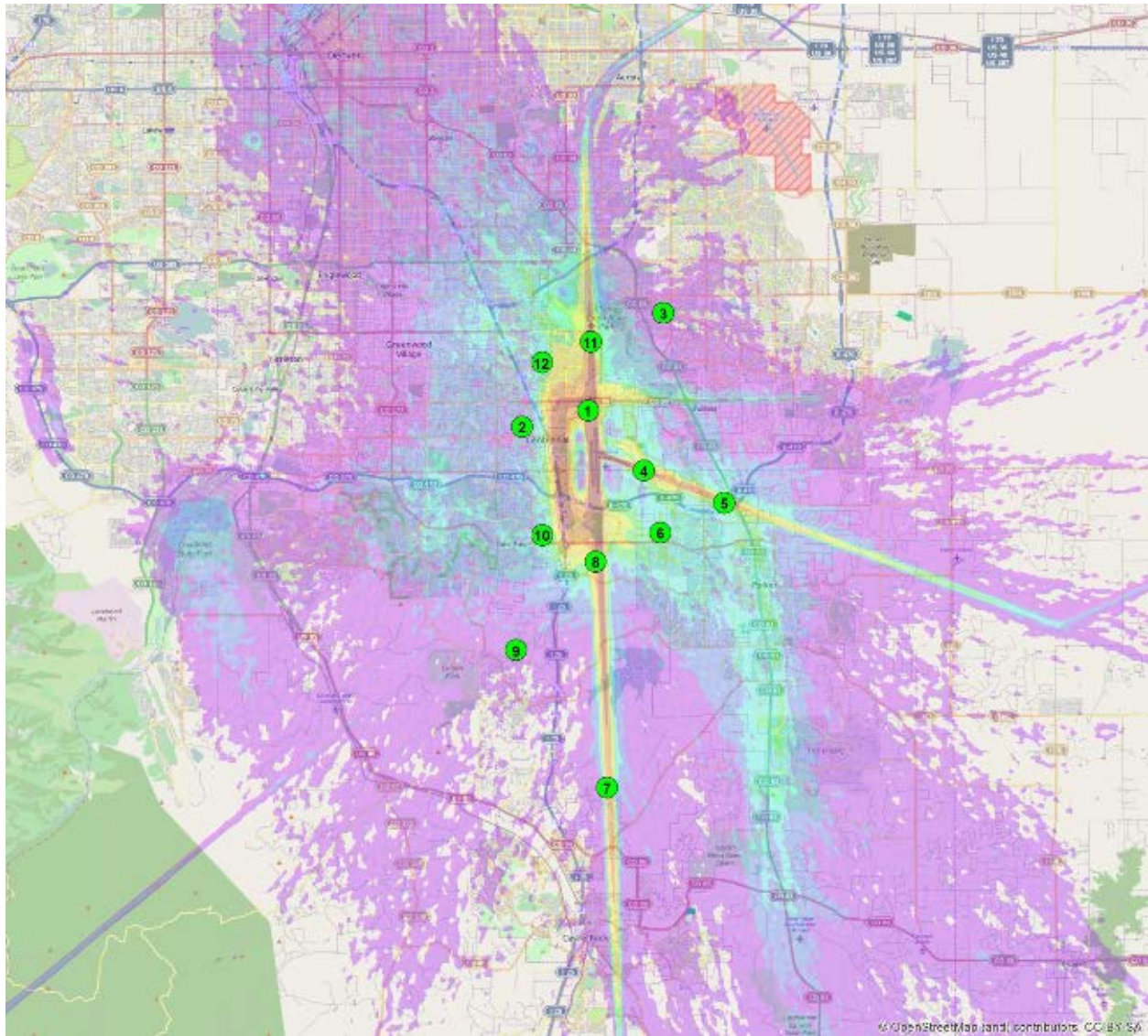
The following picture and diagrams illustrate the traffic flows for the given time period. "Flow" indicates the average direction of traffic for the given time period. Flows are dictated by wind direction at any given time as aircraft have to land and take-off into the wind.

On a general basis in Centennial Airport is in the South Flow configuration 54% of the time overall. When the weather is poor, Centennial Airport is usually in the North Flow configuration. As an example, if the Airport is in North flow configuration, aircraft will be generally departing to the north over Arapahoe County and arriving from the South over Douglas County. This is the exact opposite for South Flow. About, 12% of our overall traffic either arrives or departs on our East/West Runway 10/28.



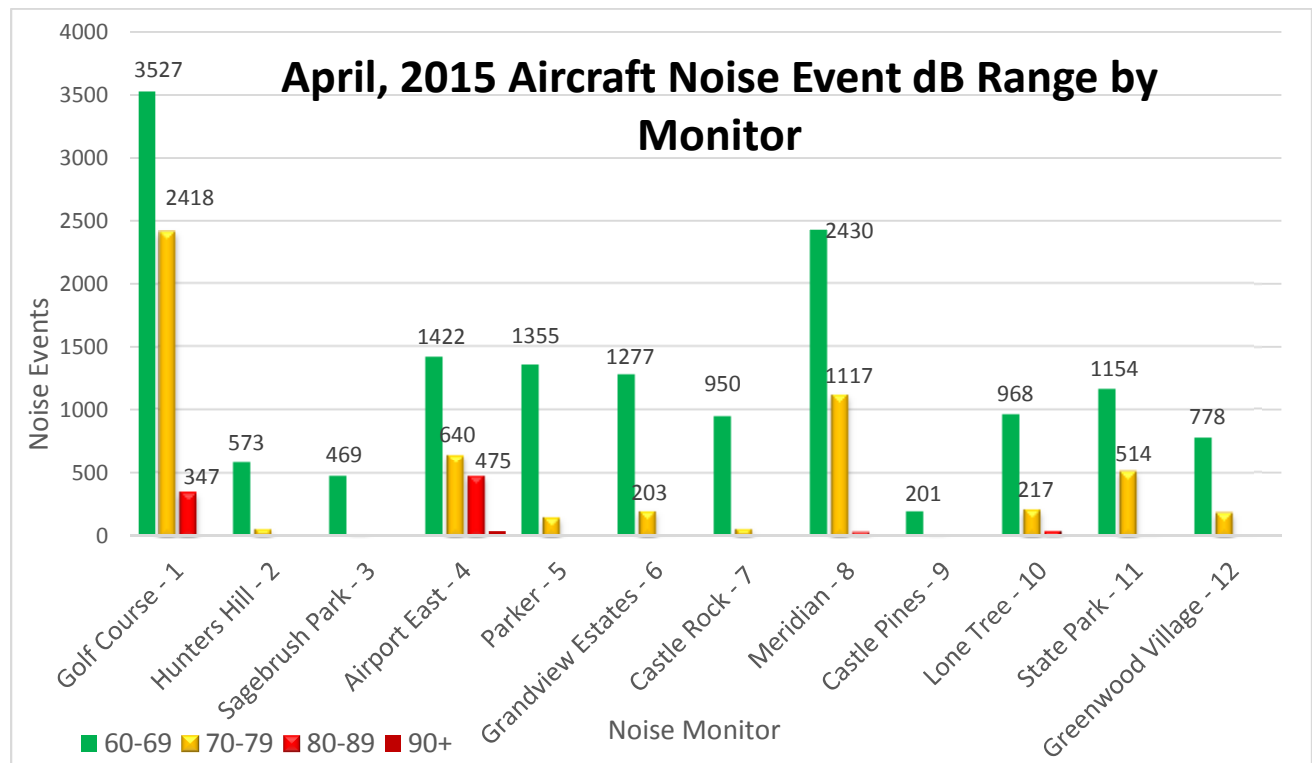
7 RADAR TRACK DENSITY MAP

The following map takes all of the flight track data for the given time period and creates a line density plot. This enables everyone to have a better understanding of where the flight tracks are at, while allowing for historical comparisons.



8 NOISE MONITOR REPORTS

April, 2015 Aircraft Noise Event Decibel Range By Monitor				
Monitor	60-69	70-79	80-89	90+
Golf Course - 1	3527	2418	347	2
Hunters Hill - 2	573	65	1	0
Sagebrush Park - 3	469	21	1	0
Airport East - 4	1422	640	475	35
Parker - 5	1355	155	2	1
Grandview Estates - 6	1277	203	8	0
Castle Rock - 7	950	67	3	0
Meridian - 8	2430	1117	40	1
Castle Pines - 9	201	15	0	0
Lone Tree - 10	968	217	45	1
State Park - 11	1154	514	12	1
Greenwood Village - 12	778	192	9	0



9 NOTES AND DISCLAIMER

This report is for informational use only. Every effort has been made to insure the accuracy of these data; however, this material may be change slightly as data points are updated.

Centennial Airport disclaims any responsibility or liability for any direct or indirect damages resulting from the use of this data. We hope this information provides you with a valuable tool in reviewing noise data and characteristics in your area. If you have questions or concerns, always contact the Centennial Airport Noise office at **303-790-0598**.