



Monthly Noise Report

May, 2015

Centennial Airport

Arapahoe County Public Airport Authority

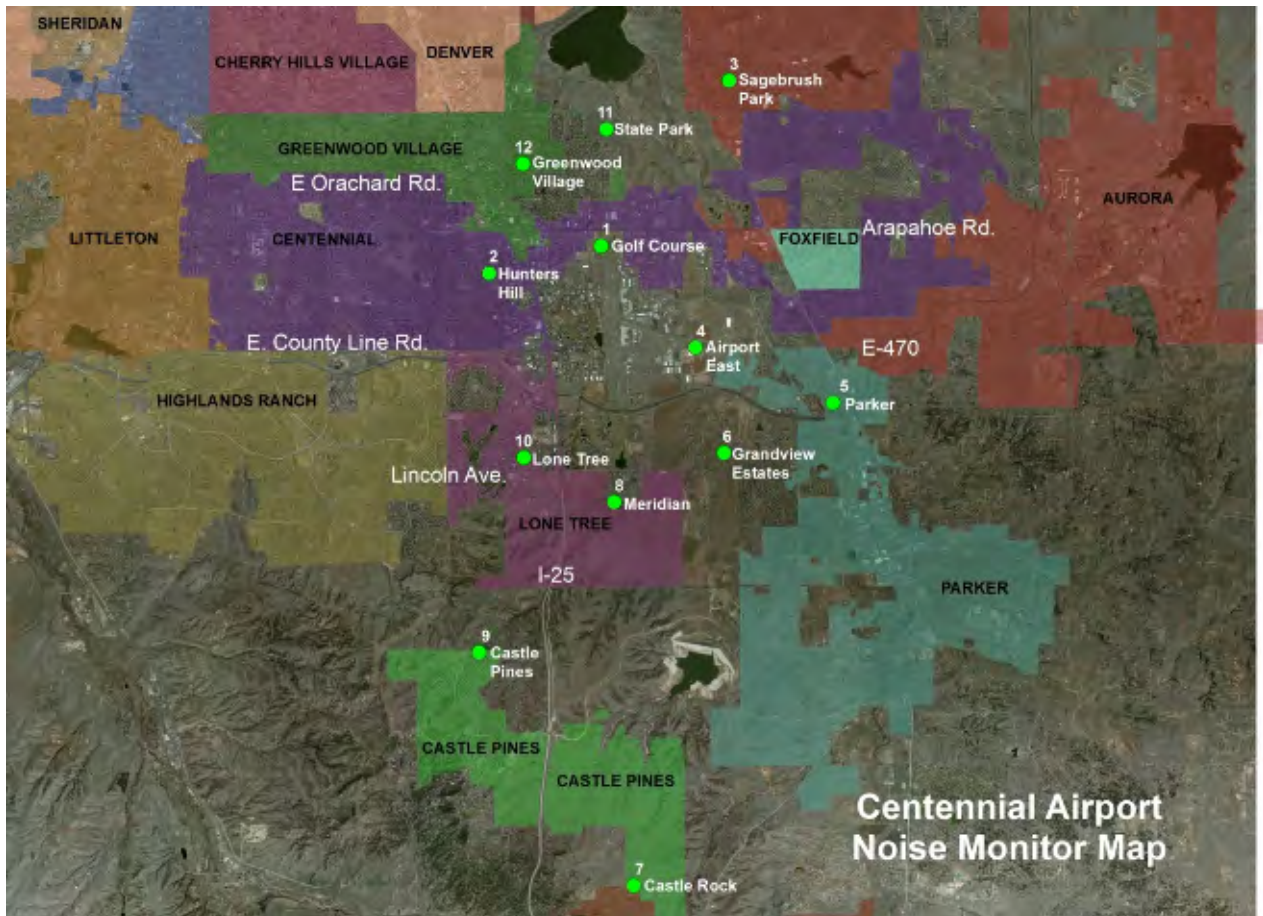
1 TABLE OF CONTENTS

2	About APA's Noise Monitoring Program	2
3	About WebTrak™	3
4	May 2015 Noise Complaints	4
5	Complaint Map	7
6	Runway Usage Statistics	9
7	Radar Track Density Map	10
8	Noise Monitor Reports.....	11
9	Notes and Disclaimer	12

Overview

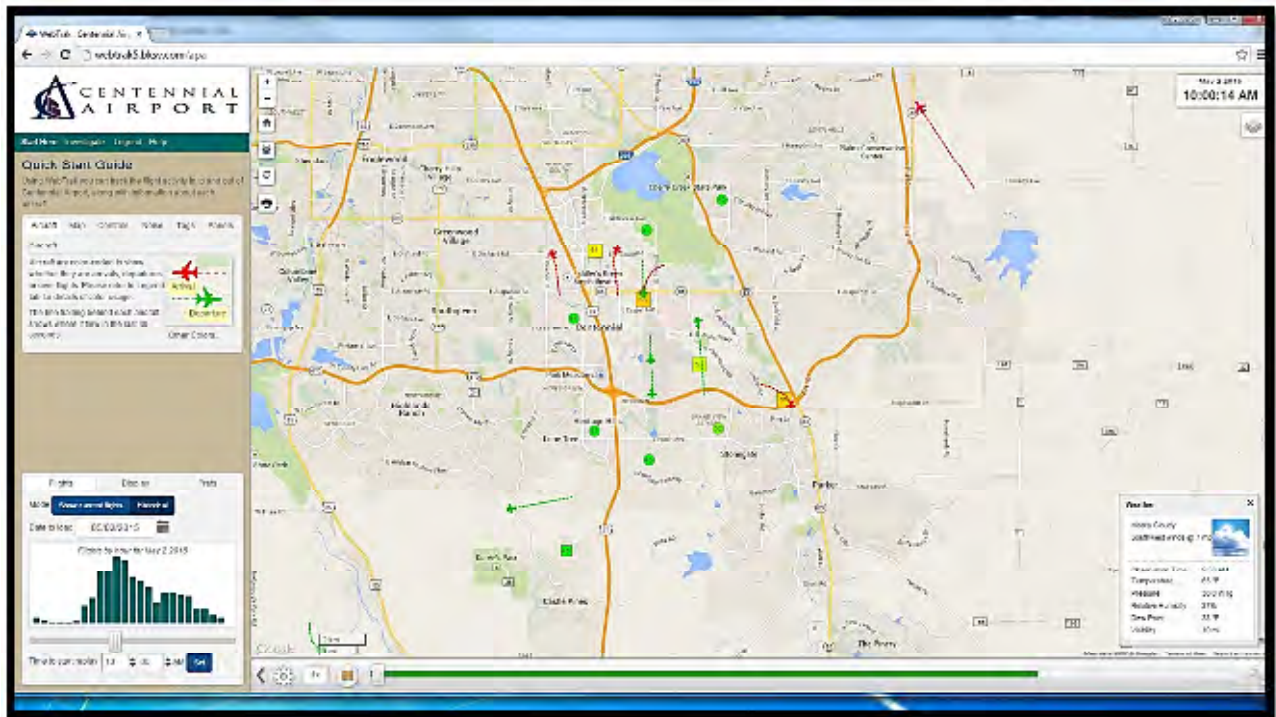
2 ABOUT APA'S NOISE MONITORING PROGRAM

Centennial Airport's (KAPA) Noise and Operations Monitoring System (ANOMS) is a new state of the art system that enables the Arapahoe County Public Airport Authority to monitor and better understand aircraft noise in the vicinity of Centennial Airport. This system is comprised of 12 fixed noise monitoring terminals in the community, as well as 2 portable monitors that are available for short term monitoring anywhere in the community.



3 ABOUT WEBTRAK™

As part of an ongoing program, Centennial Airport now offers an online tracking system for the movement of flights and air traffic patterns within the Denver Metro area. **WebTrak** Flight Tracking and Noise Information System allows concerned individuals to research data about flights to and from Centennial Airport, Denver International Airport, Rocky Mountain Metropolitan Airport, Front Range Airport and Buckley Air Force Base , as well as any transitional air traffic through the region.



How to participate

The general public may use **WebTrak** to investigate a noise or flight that occurred near their location. The system also simplifies the process of filing a noise complaint, offering an easy, online option for residents to register concerns regarding noise levels at the following web addresses:

APA WebTrak: <http://webtrak.bksv.com/apa>

Centennial Airport Website: <http://www.centennialairport.com>

In addition, noise complaints can also be submitted on our noise hotline:

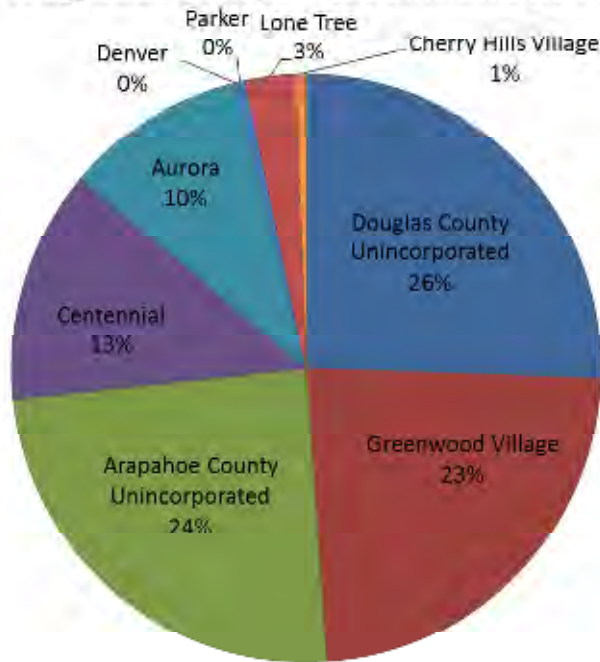
APA Noise Hotline:

303-790-4709

4 MAY 2015 NOISE COMPLAINTS

As of May 31, 2015 Year to Date, Centennial Airport received 1,076 Complaints from 108 Households. For the month of May, Centennial Airport received 180 Complaints from 39 Households.

May, 2015 Complaints per Municipality



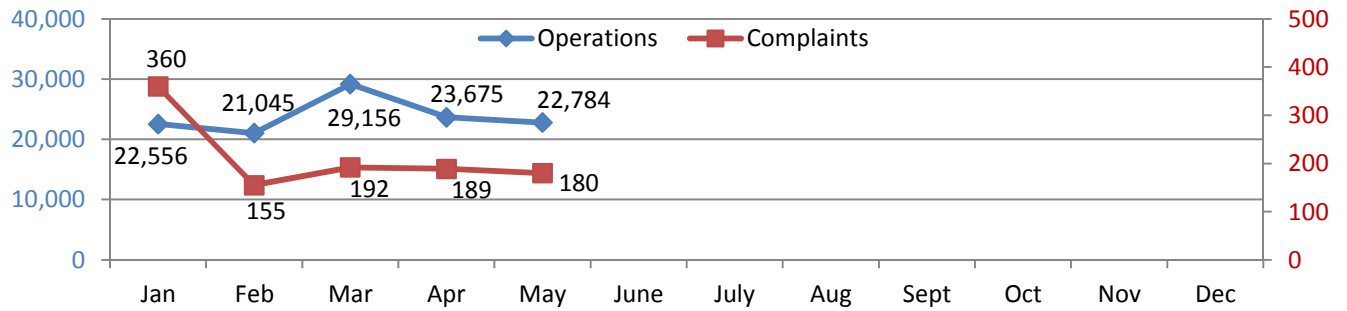
2015 - May Noise Complaints

Municipality	Complaints	Households
Douglas County Unincorporated	46	3
Arapahoe County Unincorporated	44	13
Greenwood Village	42	8
Centennial	23	6
Aurora	18	3
Lone Tree	5	4
Parker	1	1
Cherry Hills Village	1	1
Denver	0	0
Castle Pines	0	0
Castle Rock	0	0
Highlands Ranch	0	0
Total	180	39

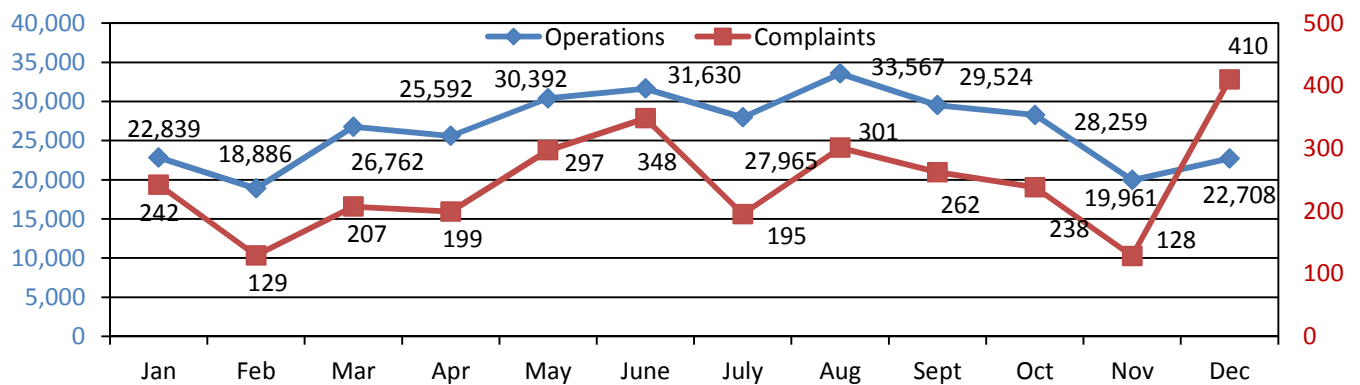
Month Comparison: 2015 Noise Complaints Daytime vs. Nighttime

Time Complaint Received	Jan	Feb	Mar	Apr	May	Jun	Jul	Aug	Sept	Oct	Nov	Dec	2015 YTD
Day Hours (6:00 am - 9:59pm)	319	137	151	152	151	0	0	0	0	0	0	0	910
Night Hours (10:00 pm - 5:59 am)	41	18	41	37	29	0	0	0	0	0	0	0	166
TOTAL	360	155	192	189	180	0	0	0	0	0	0	0	1,076

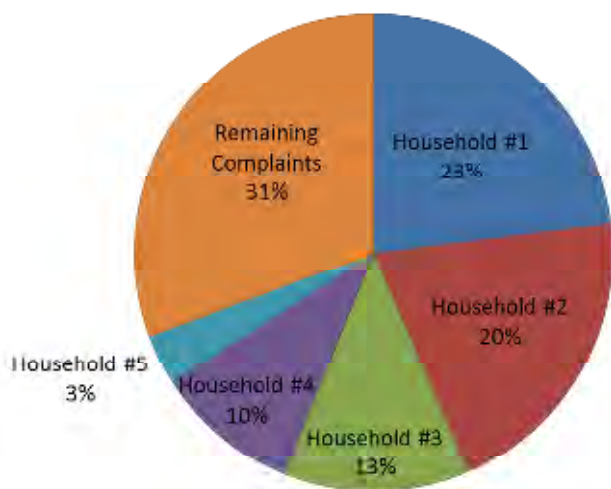
2015 YTD



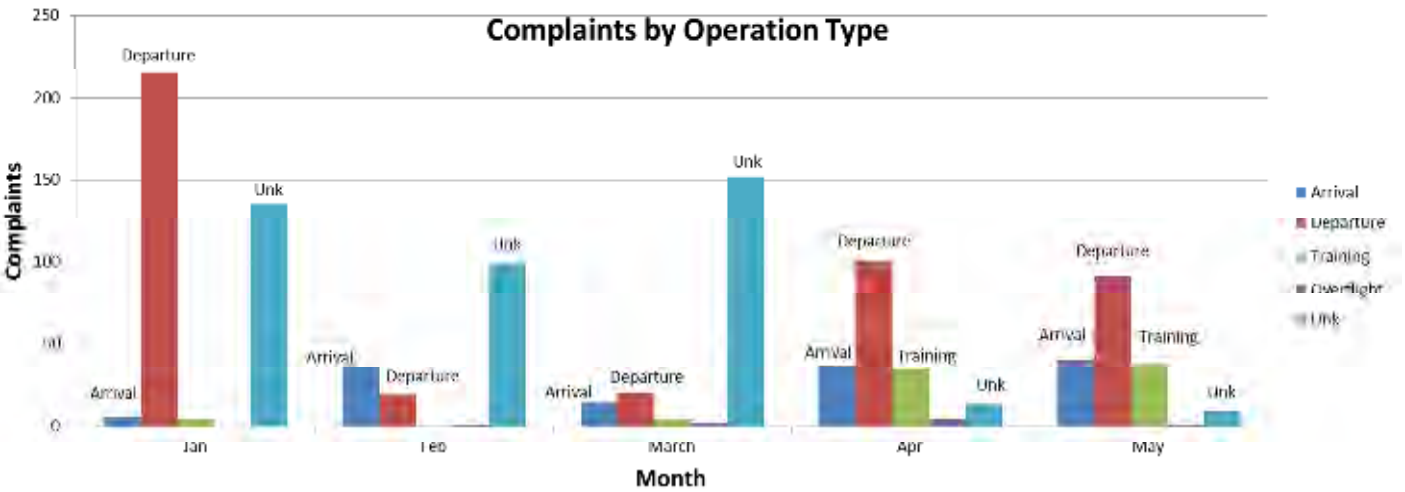
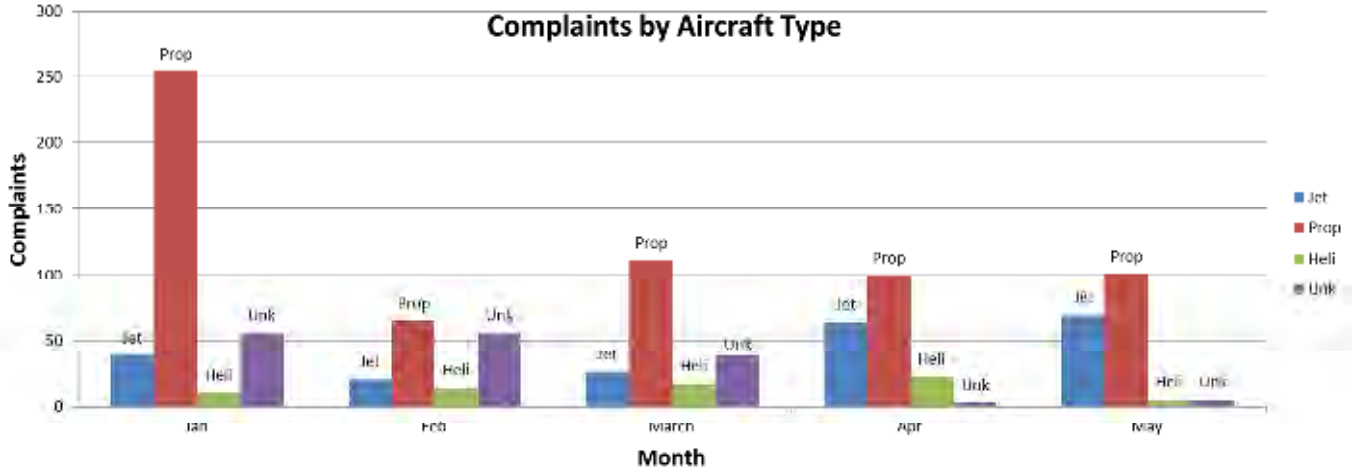
2014



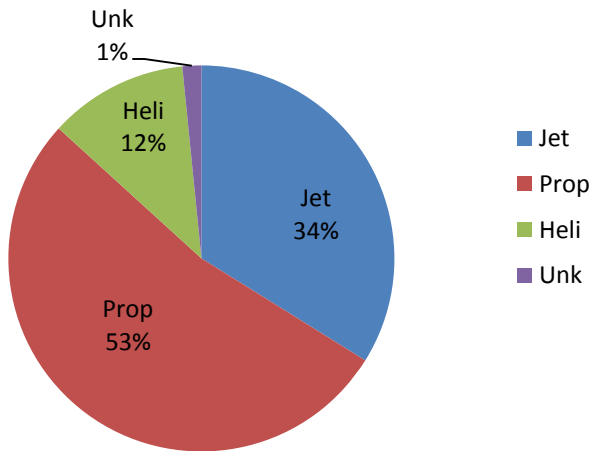
May, 2015 YTD Top 5 Household Complaints



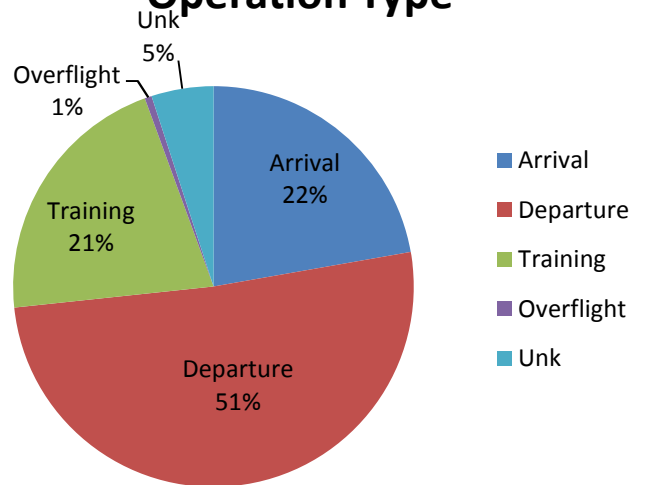
May, 2015 YTD Top 5 Household Complaints		
Household	Complaints	Households
Household #1	248	Unincorporated Douglas County
Household #2	220	Centennial
Household #3	136	Greenwood Village
Household #4	105	Centennial
Household #5	37	Unincorporated Arapahoe County
Remaining	330	
Total	1,076	



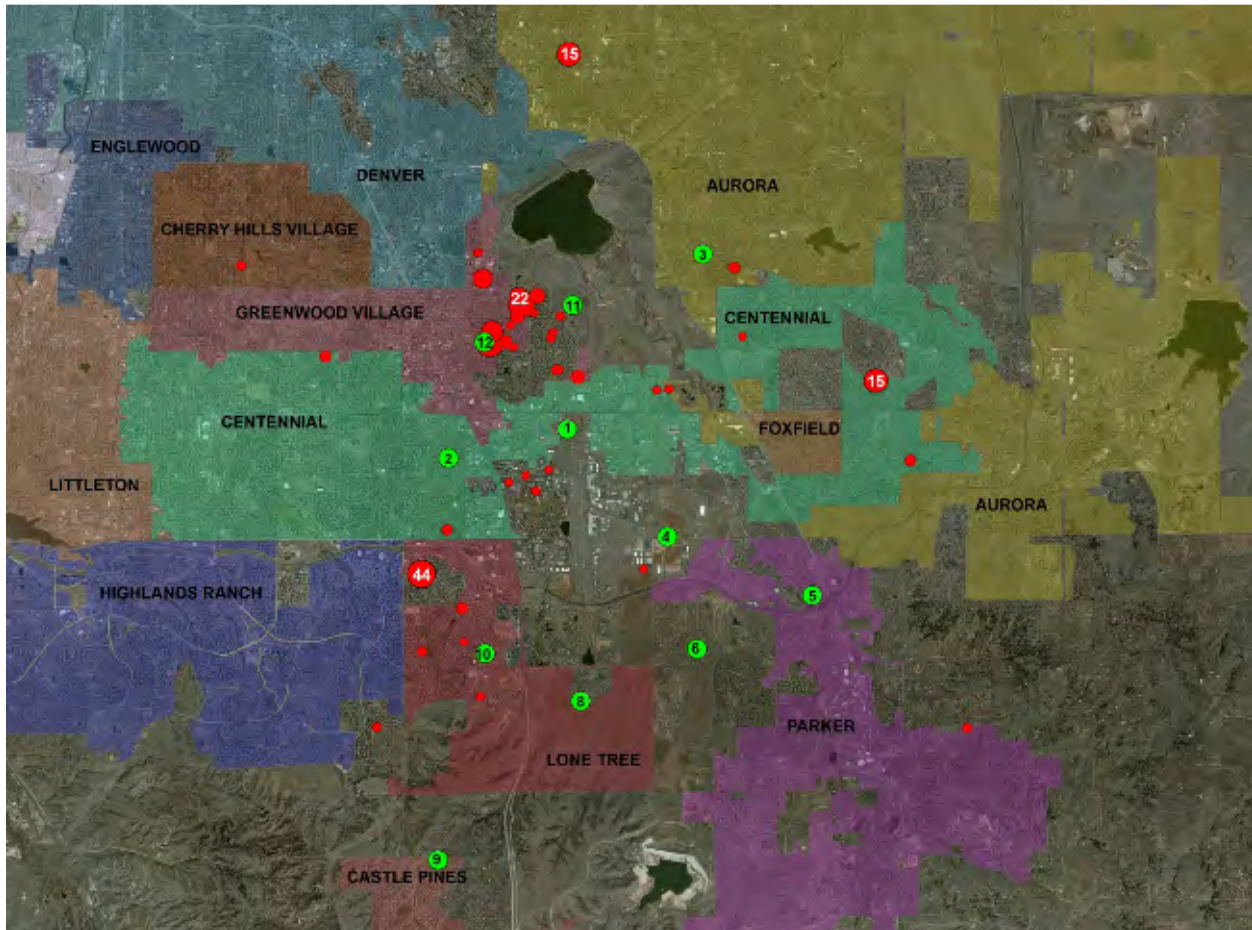
May, 2015 Complaints by Aircraft Type



May, 2015 Complaints by Operation Type



5 COMPLAINT MAP



MAP LEGEND:

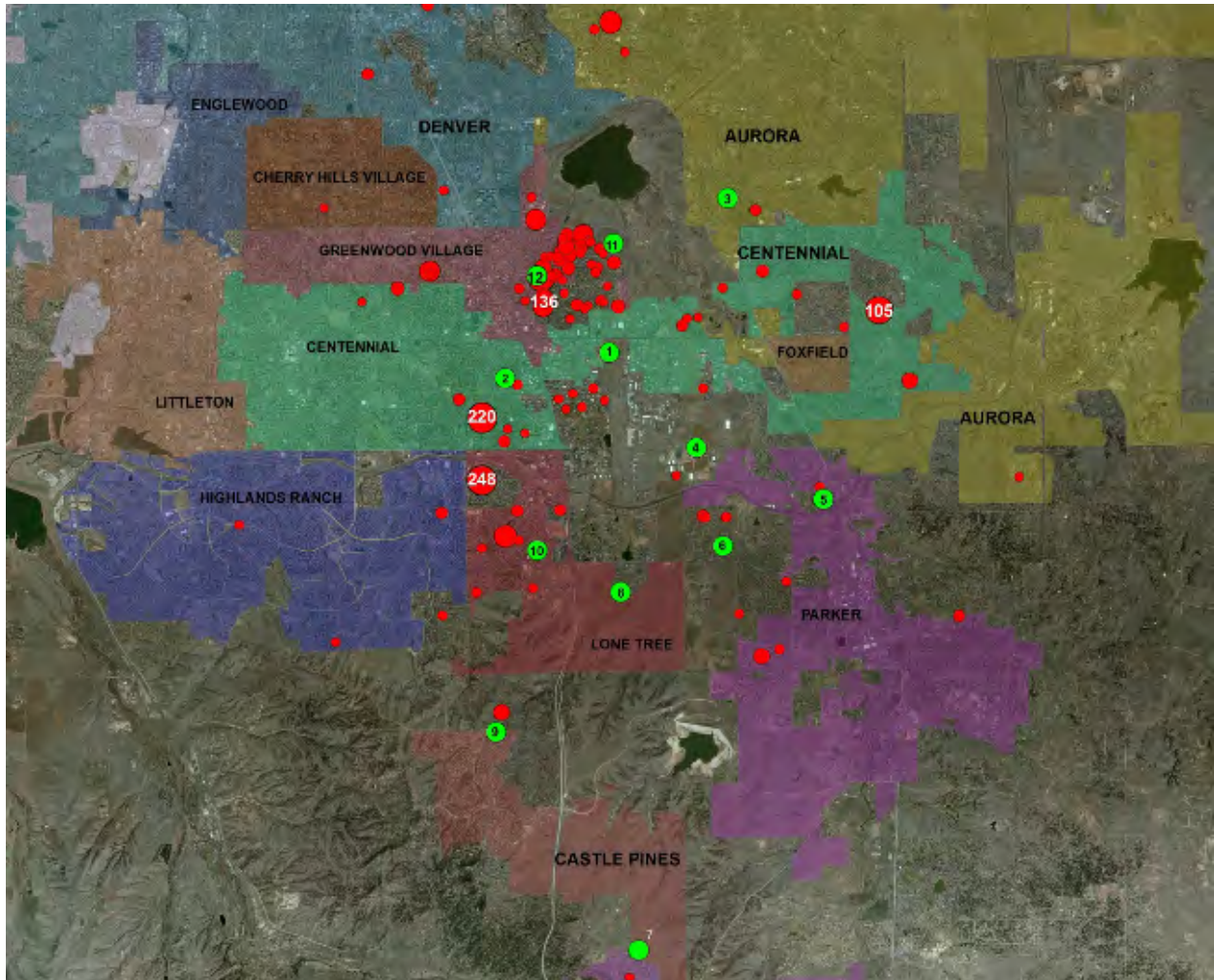
May, 2015 Complaints

Green = Noise Monitor Locations

Red = Household Complaint Locations.

*Larger dots equate to more complaints for that particular household

*Current zoom level shows all complaints for the month of May, 2015



MAP LEGEND:

YTD Complaints through May, 2015

Green = Noise Monitor Locations

Red = Household Complaint Locations.

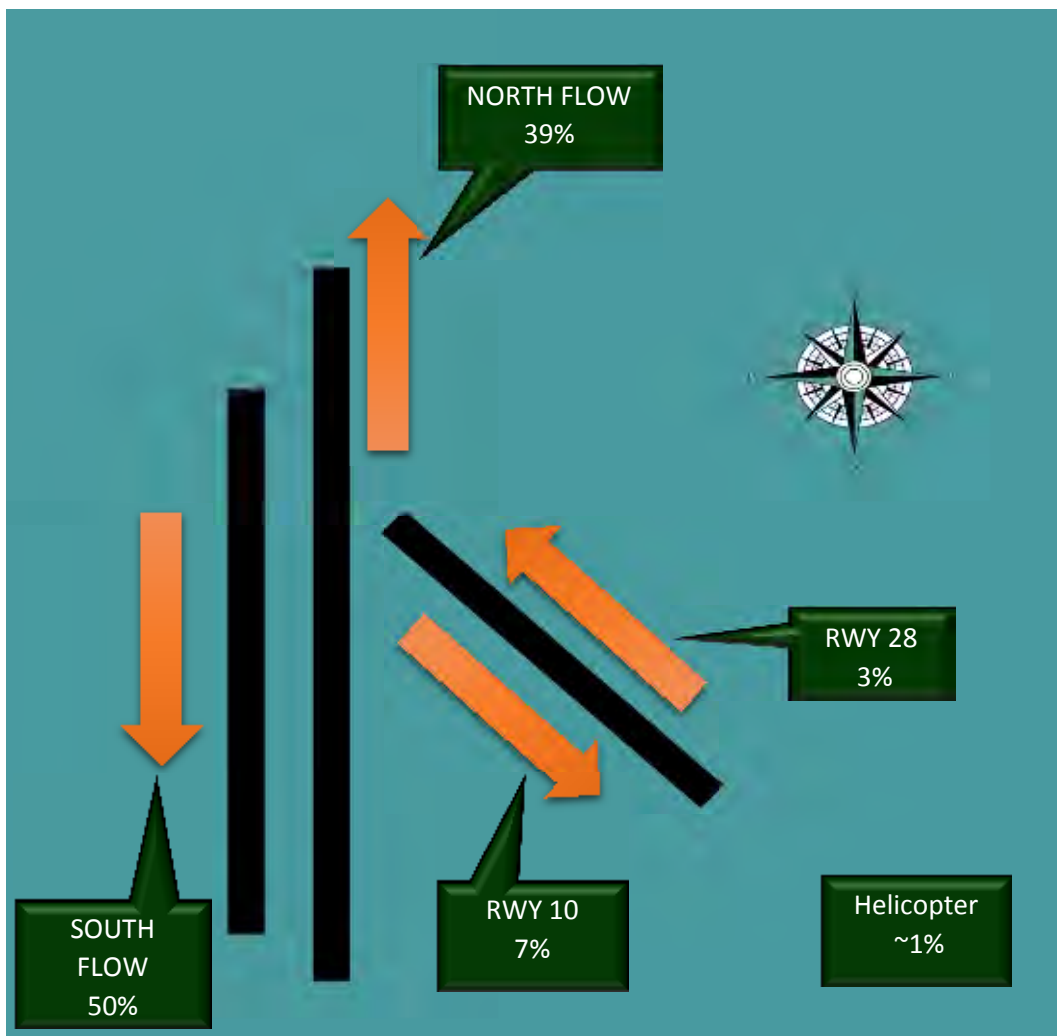
*Larger dots equate to more complaints for that particular household

*Current zoom level excludes 1 household in Castle Rock and 1 in Denver

6 RUNWAY USAGE STATISTICS

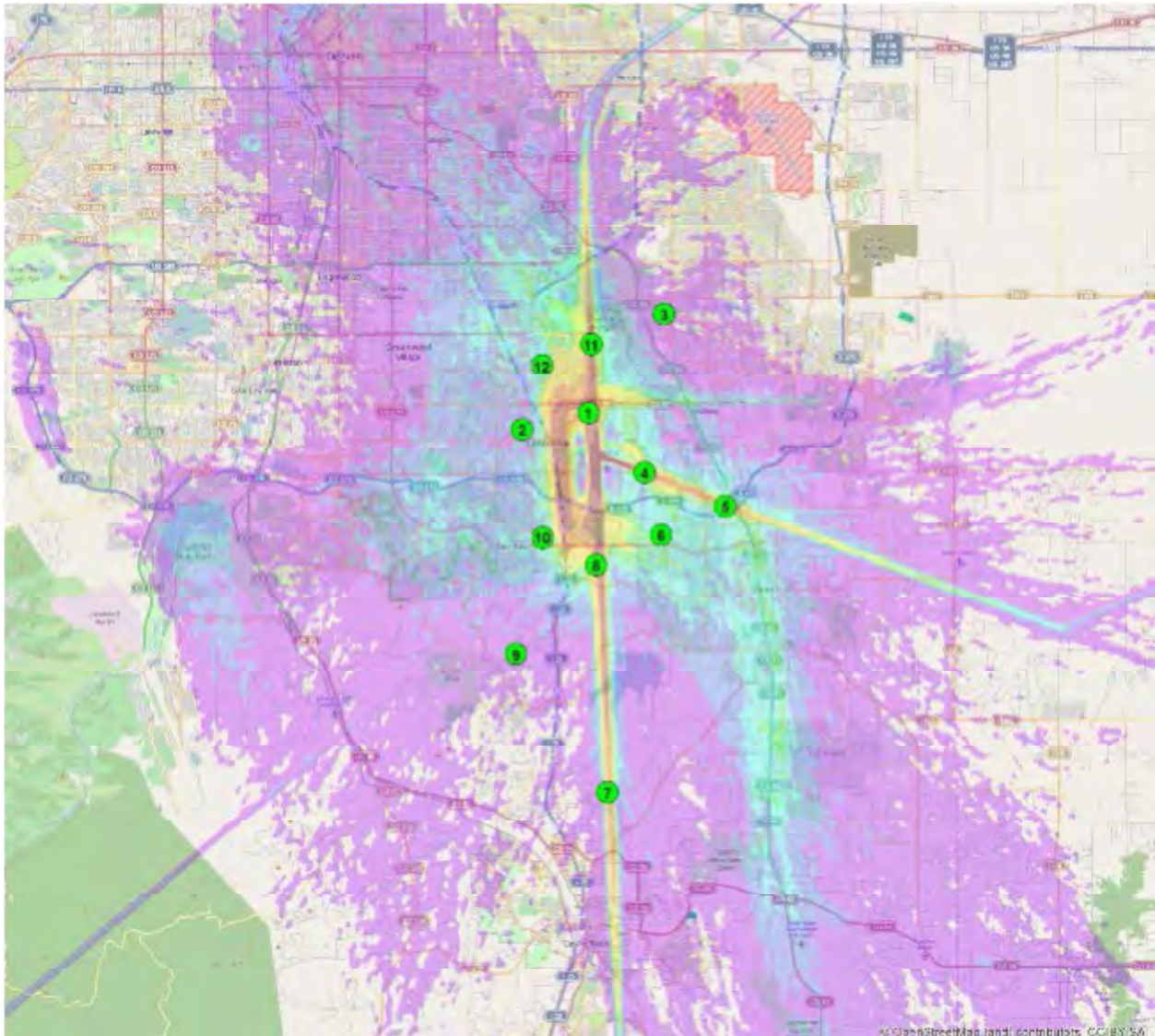
The following picture and diagrams illustrate the traffic flows for the given time period. "Flow" indicates the average direction of traffic for the given time period. Flows are dictated by wind direction at any given time as aircraft have to land and take-off into the wind.

On a general basis Centennial Airport is in the South Flow configuration 54% of the time overall. When the weather is poor, Centennial Airport is usually in the North Flow configuration. As an example, if the Airport is in North flow configuration, aircraft will be generally departing to the north over Arapahoe County and arriving from the South over Douglas County. This is the exact opposite for South Flow. About, 12% of our overall traffic either arrives or departs on our East/West Runway 10/28. About, 12% of our overall traffic either arrives or departs on our East/West Runway 10/28.



7 RADAR TRACK DENSITY MAP

The following map takes all of the flight track data for the given time period and creates a line density plot. This enables everyone to have a better understanding of where the flight tracks are at, while allowing for historical comparisons. Dark red in the middle of the picture shows the highest density of flight tracks over the runways. The colors gradually move out to pink as the least dense.



April, 2015 Flight Tracks into Centennial Airport.

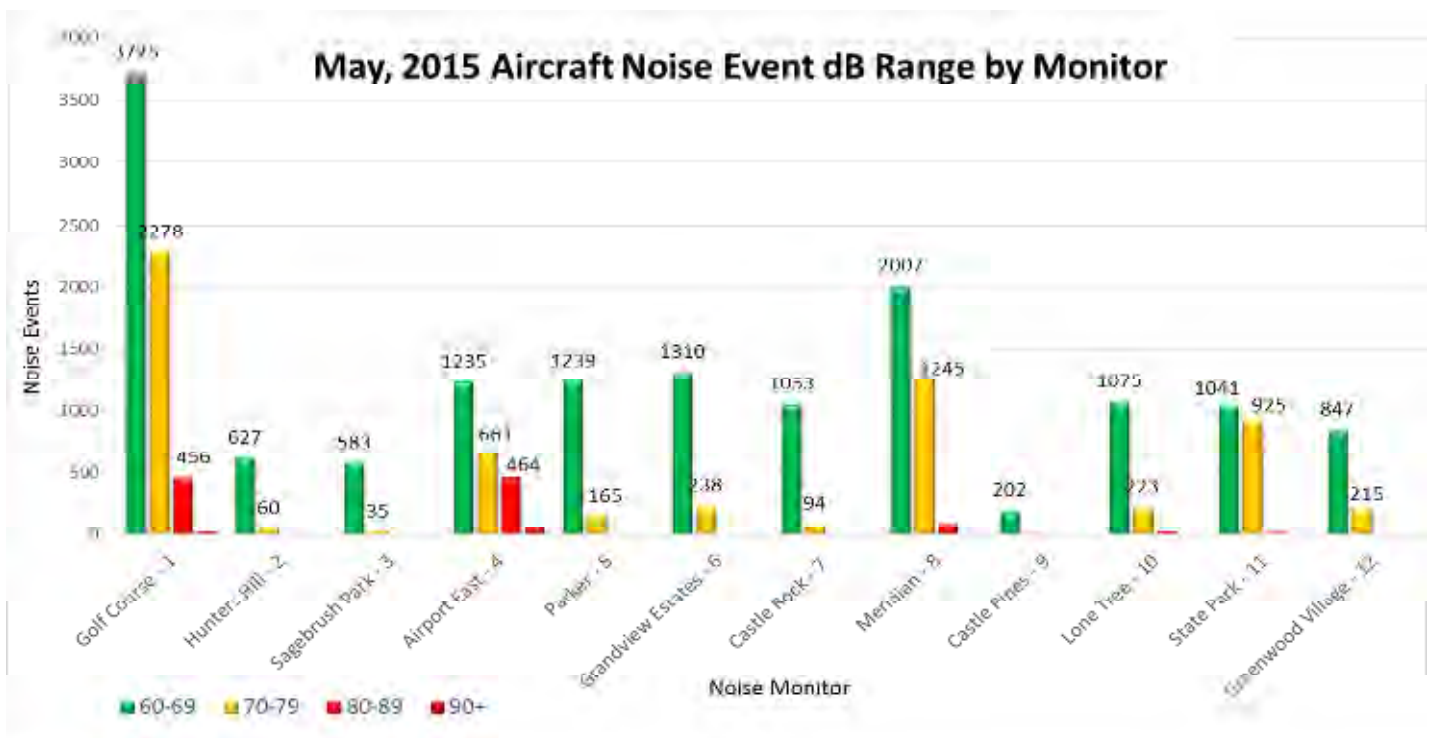
8 NOISE MONITOR REPORTS

The following data displays the amount and associated decibel level of aircraft noise events at a given monitor. An aircraft noise event must contain the following characteristics:

First, the noise event must exceed the ambient noise level. This number varies at every monitor, but is generally greater than 50-55db. Secondly, the noise event must last longer than 5 seconds. Lastly, using radar data, the system must correlate an aircraft with the noise event. This ensures that the sound is not associated with a 'community noise event' such as a lawn mowers or emergency sirens.

The information below reflects only aircraft noise events as described above.

May, 2015 Aircraft Noise Event Decibel Range By Monitor				
Monitor	60-69	70-79	80-89	90+
Golf Course - 1	3725	2278	456	24
Hunters Hill - 2	627	60	9	0
Sagebrush Park - 3	583	35	0	0
Airport East - 4	1235	661	464	55
Parker - 5	1239	165	7	3
Grandview Estates - 6	1310	238	18	0
Castle Rock - 7	1053	94	2	0
Meridian - 8	2007	1245	94	11
Castle Pines - 9	202	23	1	0
Lone Tree - 10	1075	223	29	3
State Park - 11	1041	925	22	2
Greenwood Village - 12	847	215	17	1



9 NOTES AND DISCLAIMER

This report is for informational use only. Every effort has been made to ensure the accuracy of this data; however, the material may be altered as new information is added or updated in the system.

Centennial Airport disclaims any responsibility or liability for any direct or indirect damages resulting from the use of this data. We hope this information provides you with a valuable tool in which to review noise data and characteristics in your area. If you have questions or concerns, please contact the Centennial Airport Noise office at **303-790-0598**.