



CENTENNIAL
AIRPORT

Monthly Noise Report

June, 2015

Centennial Airport

Arapahoe County Public Airport Authority

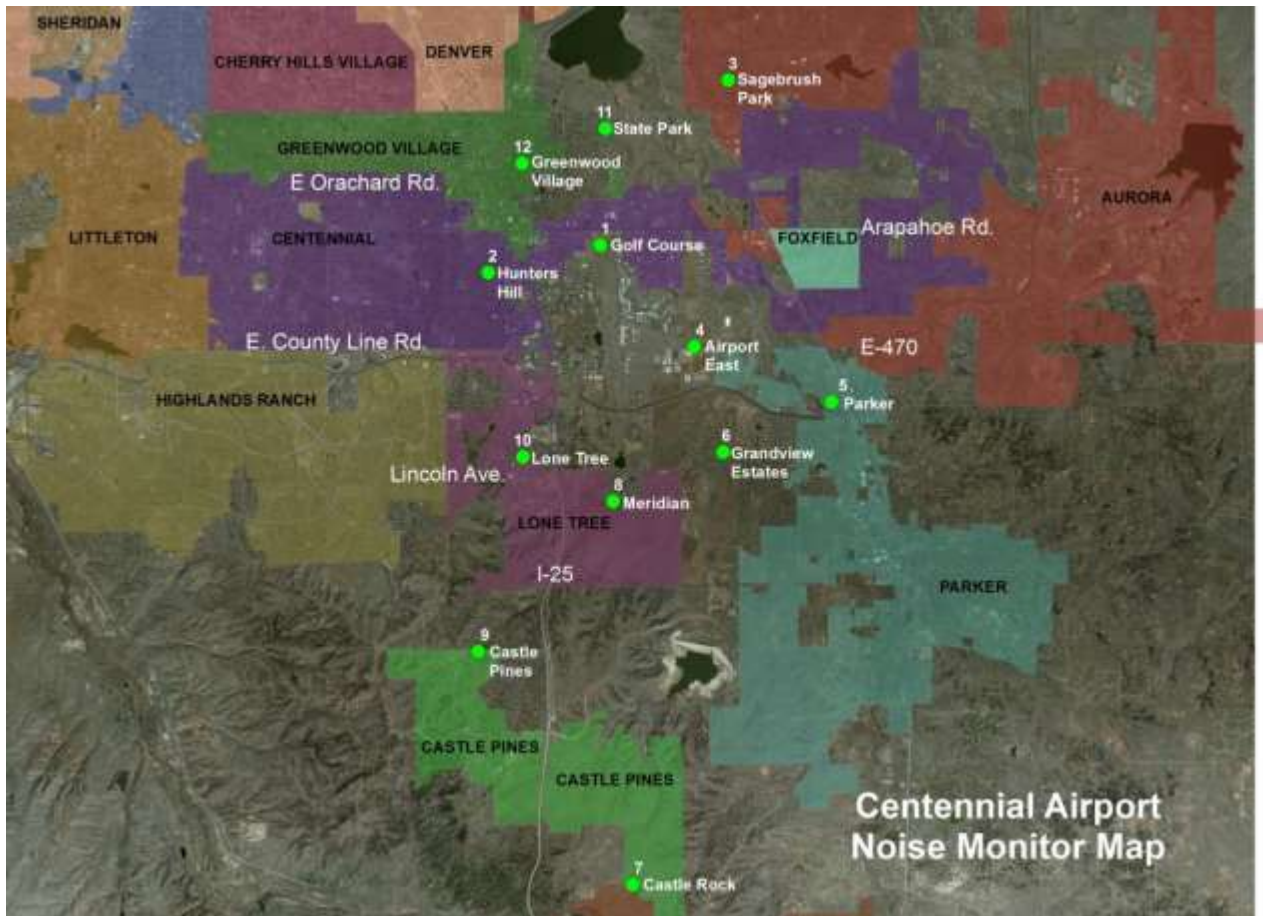
1 TABLE OF CONTENTS

2	About APA's Noise Monitoring Program	2
3	About WebTrak™	3
4	June 2015 Noise Complaints	4
5	Complaint Map	7
6	Runway Usage Statistics	9
7	Operations Statistics	10
8	Radar Track Density Map	11
9	Noise Monitor Reports.....	12
10	Notes and Disclaimer	13

Overview

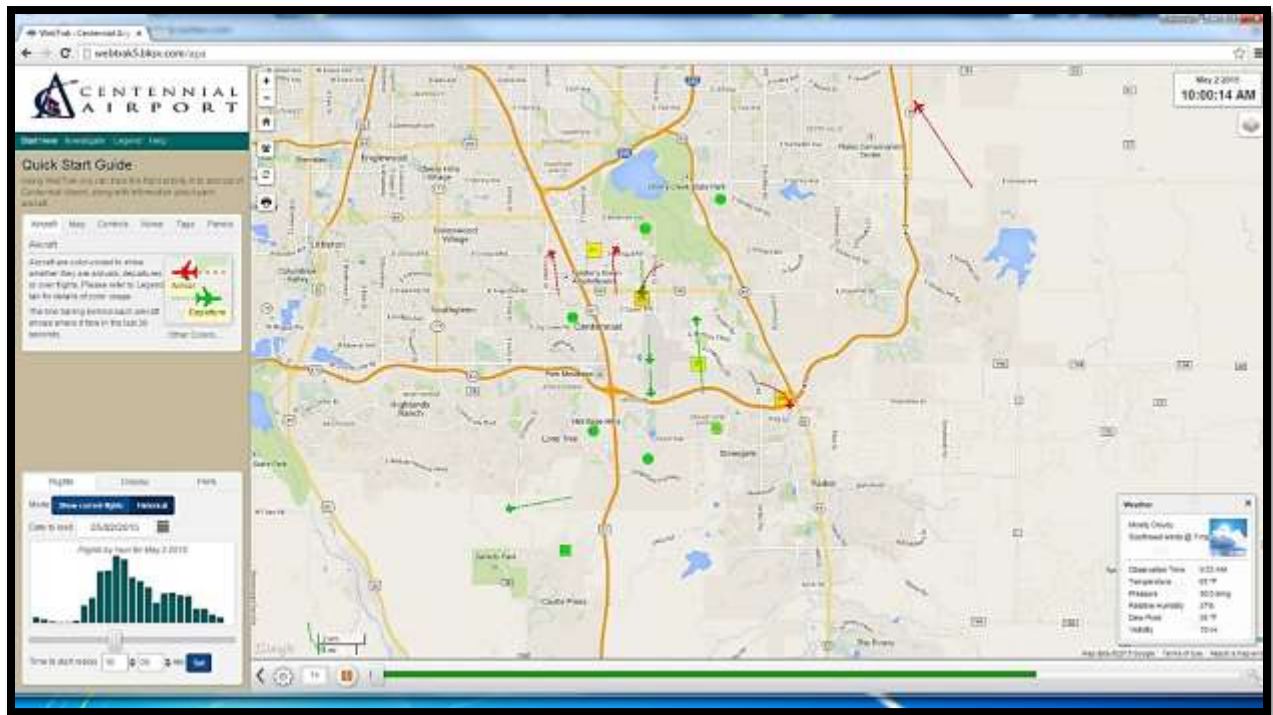
2 ABOUT APA'S NOISE MONITORING PROGRAM

Centennial Airport's (KAPA) Noise and Operations Monitoring System (ANOMS) is a new state of the art system that enables the Arapahoe County Public Airport Authority to monitor and better understand aircraft noise in the vicinity of Centennial Airport. This system is comprised of 12 fixed noise monitoring terminals in the community, as well as 2 portable monitors that are available for short term monitoring anywhere in the community.



3 ABOUT WEBTRAK™

As part of an ongoing program, Centennial Airport now offers an online tracking system for the movement of flights and air traffic patterns within the Denver Metro area. **WebTrak** Flight Tracking and Noise Information System allows concerned individuals to research data about flights to and from Centennial Airport, Denver International Airport, Rocky Mountain Metropolitan Airport, Front Range Airport and Buckley Air Force Base , as well as any transitional air traffic through the region.



How to participate

The general public may use **WebTrak** to investigate a noise or flight that occurred near their location. The system also simplifies the process of filing a noise complaint, offering an easy, online option for residents to register concerns regarding noise levels at the following web addresses:

APA WebTrak: <http://webtrak.bksv.com/apa>

Centennial Airport Website: <http://www.centennialairport.com>

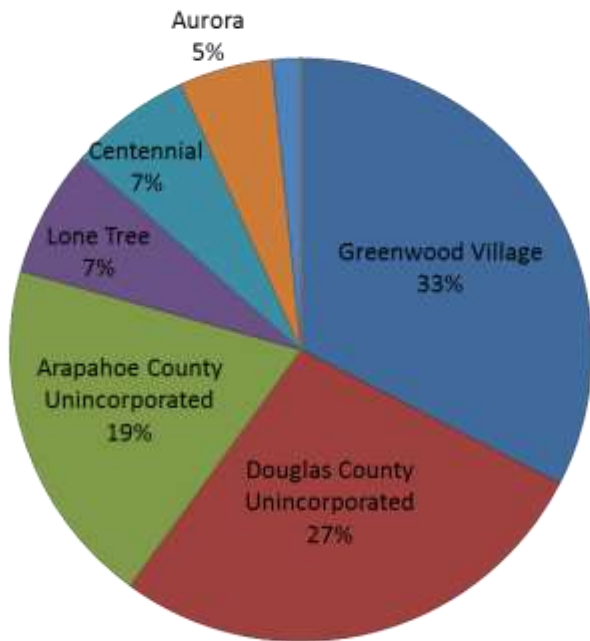
In addition, noise complaints can also be submitted on our noise hotline:

APA Noise Hotline:
303-790-4709

4 JUNE 2015 NOISE COMPLAINTS

As of June 30, 2015 Year to Date, Centennial Airport received 1,386 Complaints from 135 Households. For the month of June, Centennial Airport received 310 Complaints from 52 Households.

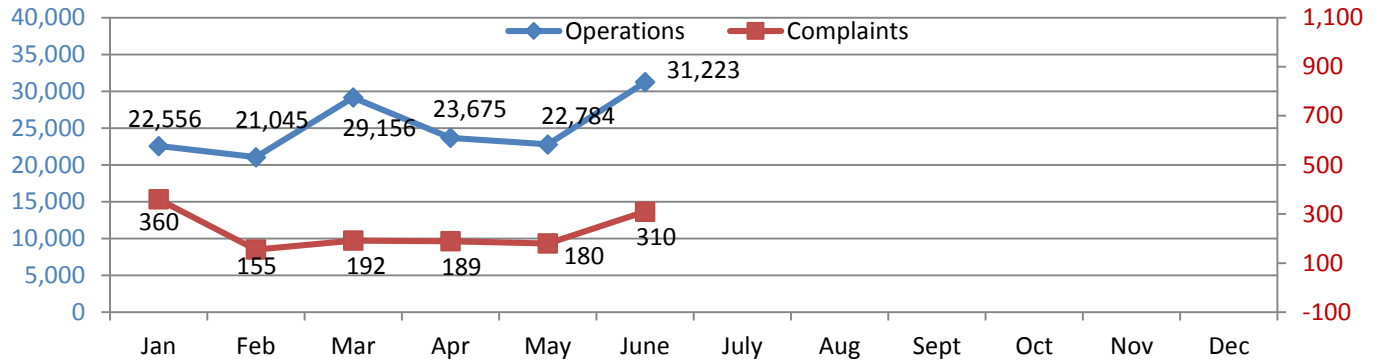
June, 2015 Complaints per Municipality



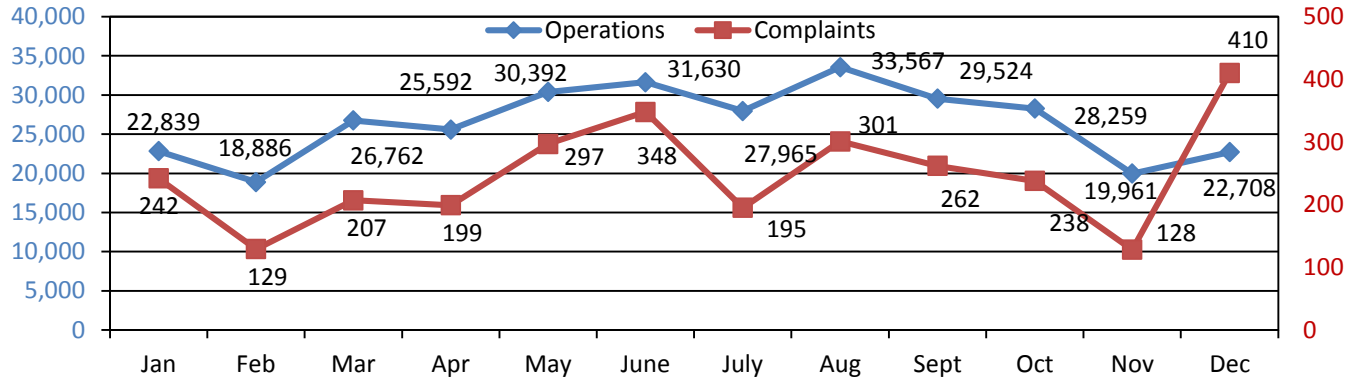
Municipality	Complaints	Households
Greenwood Village	101	9
Douglas County Unincorporated	85	12
Arapahoe County Unincorporated	60	16
Lone Tree	22	6
Centennial	21	5
Aurora	16	2
Castle Rock	5	2
Parker	0	0
Cherry Hills Village	0	0
Denver	0	0
Castle Pines	0	0
Highlands Ranch	0	0
Total	310	52

Time Complaint Received	Jan	Feb	Mar	Apr	May	Jun	Jul	Aug	Sept	Oct	Nov	Dec	2015 YTD
Day Hours (6:00 am - 9:59pm)	319	137	151	152	151	273	0	0	0	0	0	0	1,183
Night Hours (10:00 pm - 5:59 am)	41	18	41	37	29	37	0	0	0	0	0	0	203
TOTAL	360	155	192	189	180	310	0	0	0	0	0	0	1,386

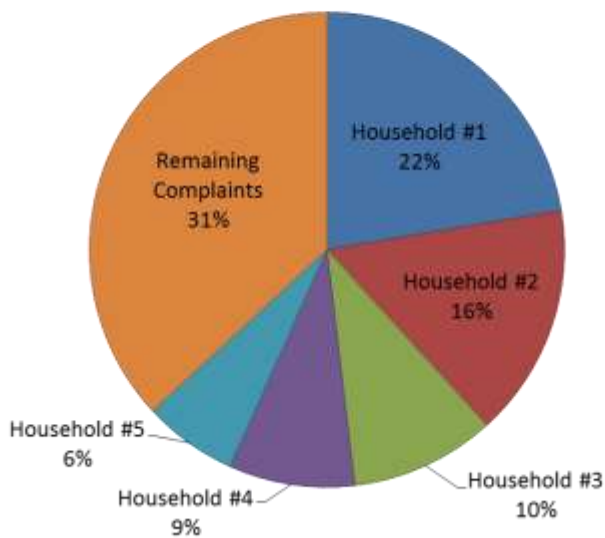
2015 YTD



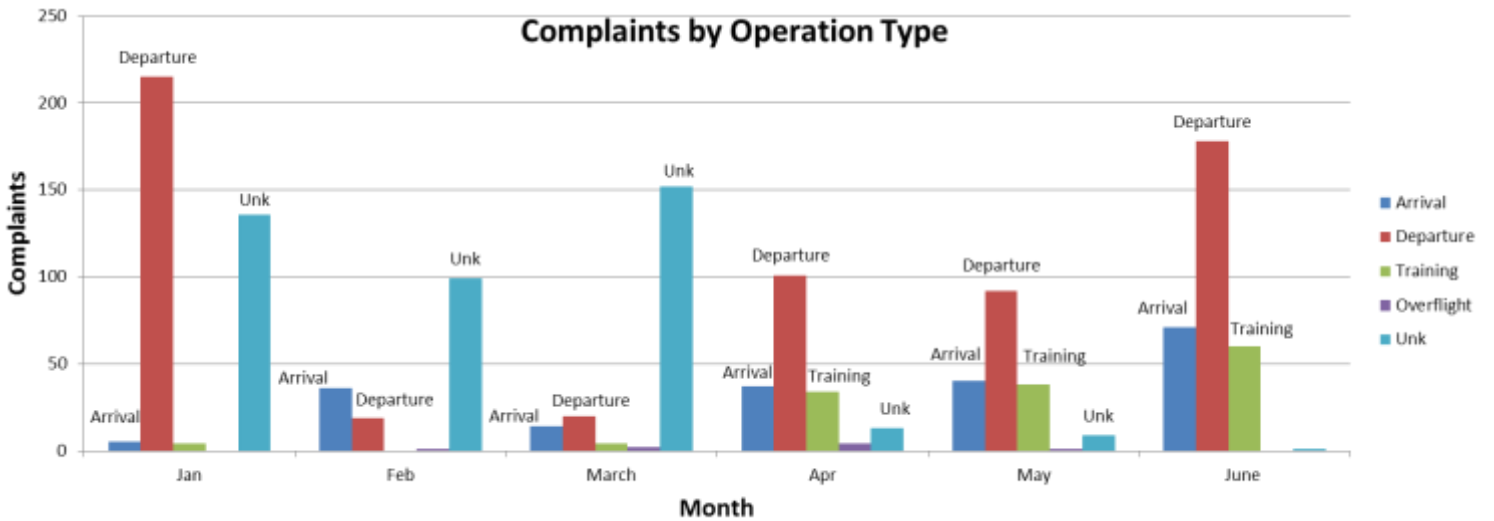
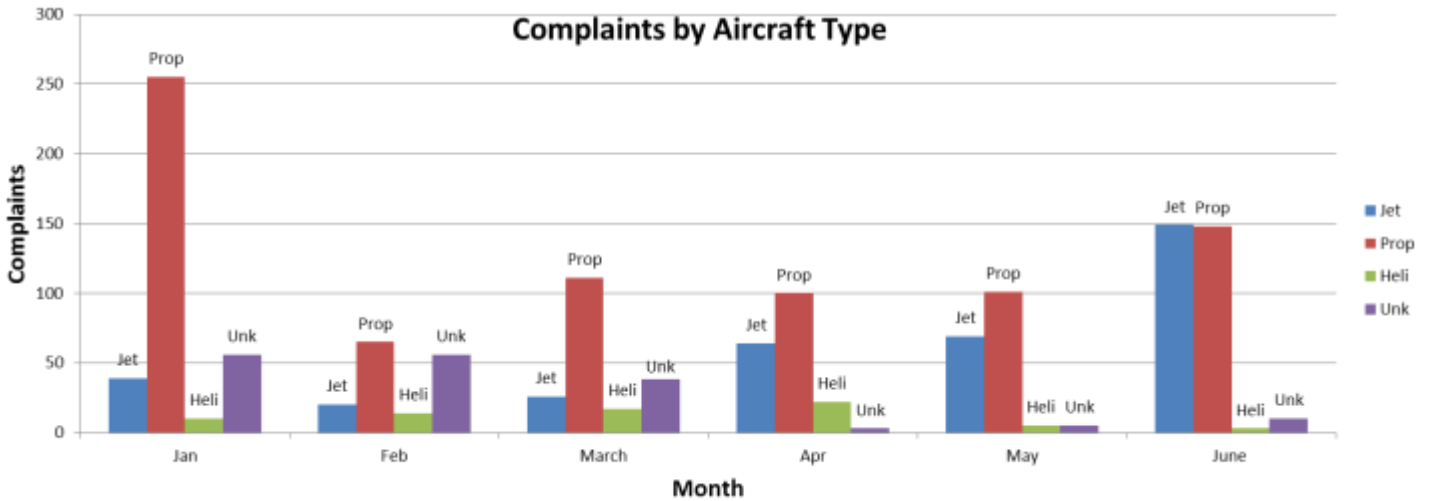
2014



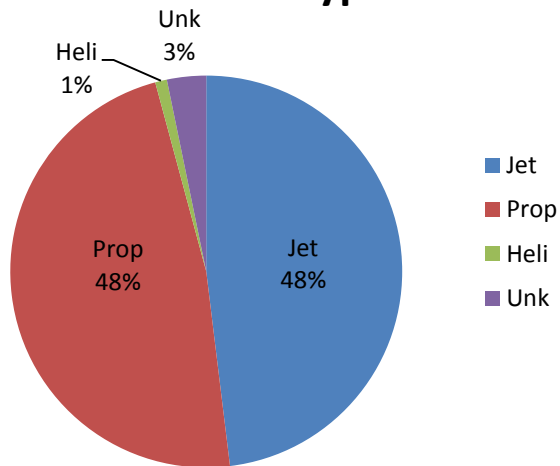
June, 2015 YTD Top 5 Household Complaints



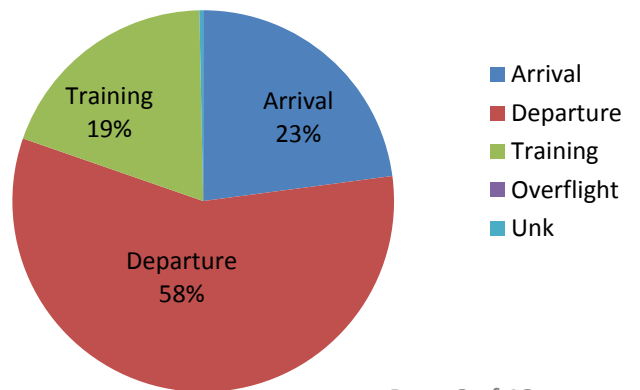
June, 2015 YTD Top 5 Household Complaints		
Household	Complaints	Households
Household #1	310	Unincorporated Douglas County
Household #2	220	Centennial
Household #3	137	Greenwood Village
Household #4	119	Centennial
Household #5	89	Greenwood Village
Remaining	511	
Total	1,386	



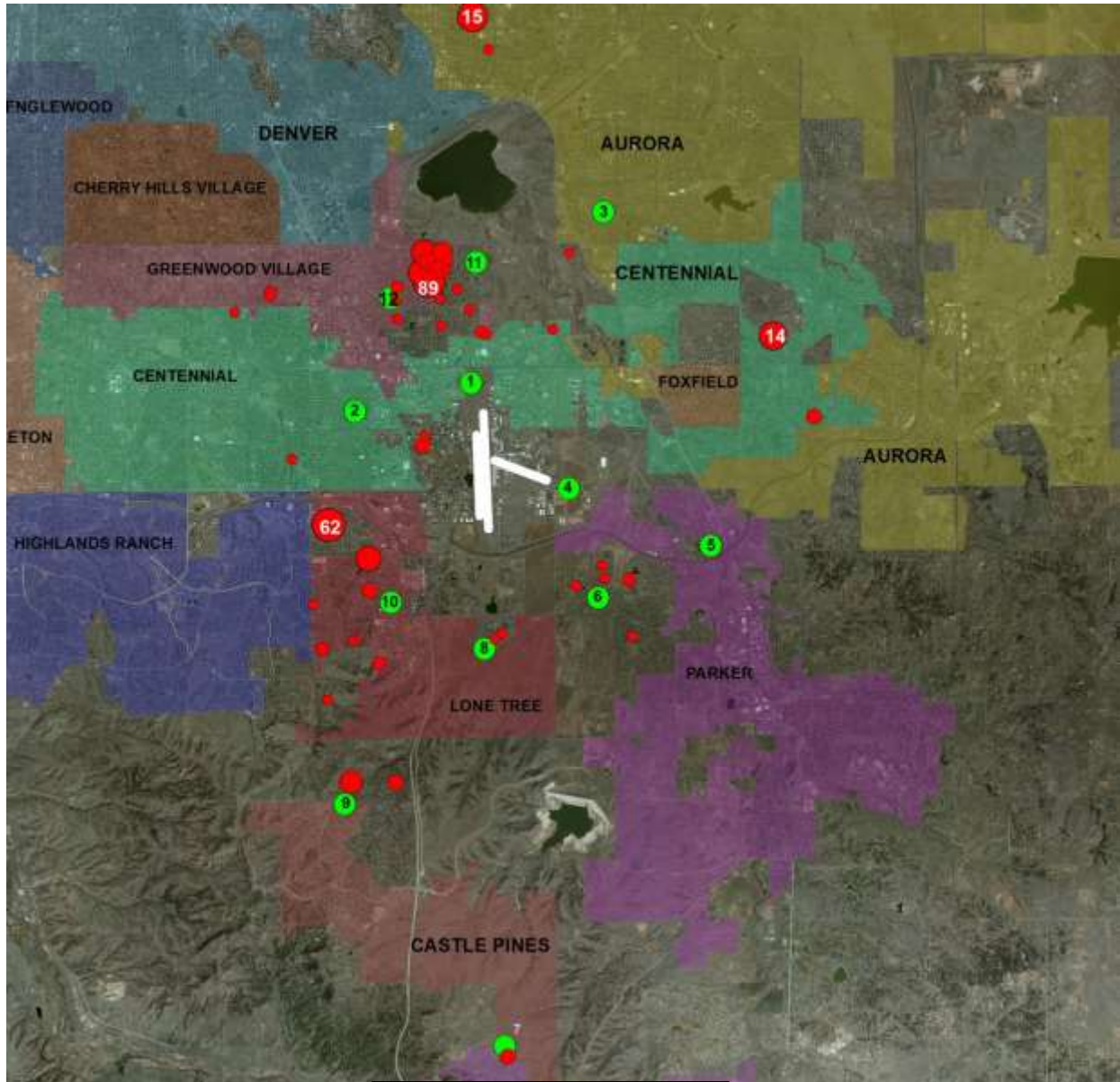
June, 2015 Complaints by Aircraft Type



June, 2015 Complaints by Operation Type



5 COMPLAINT MAP



MAP LEGEND:

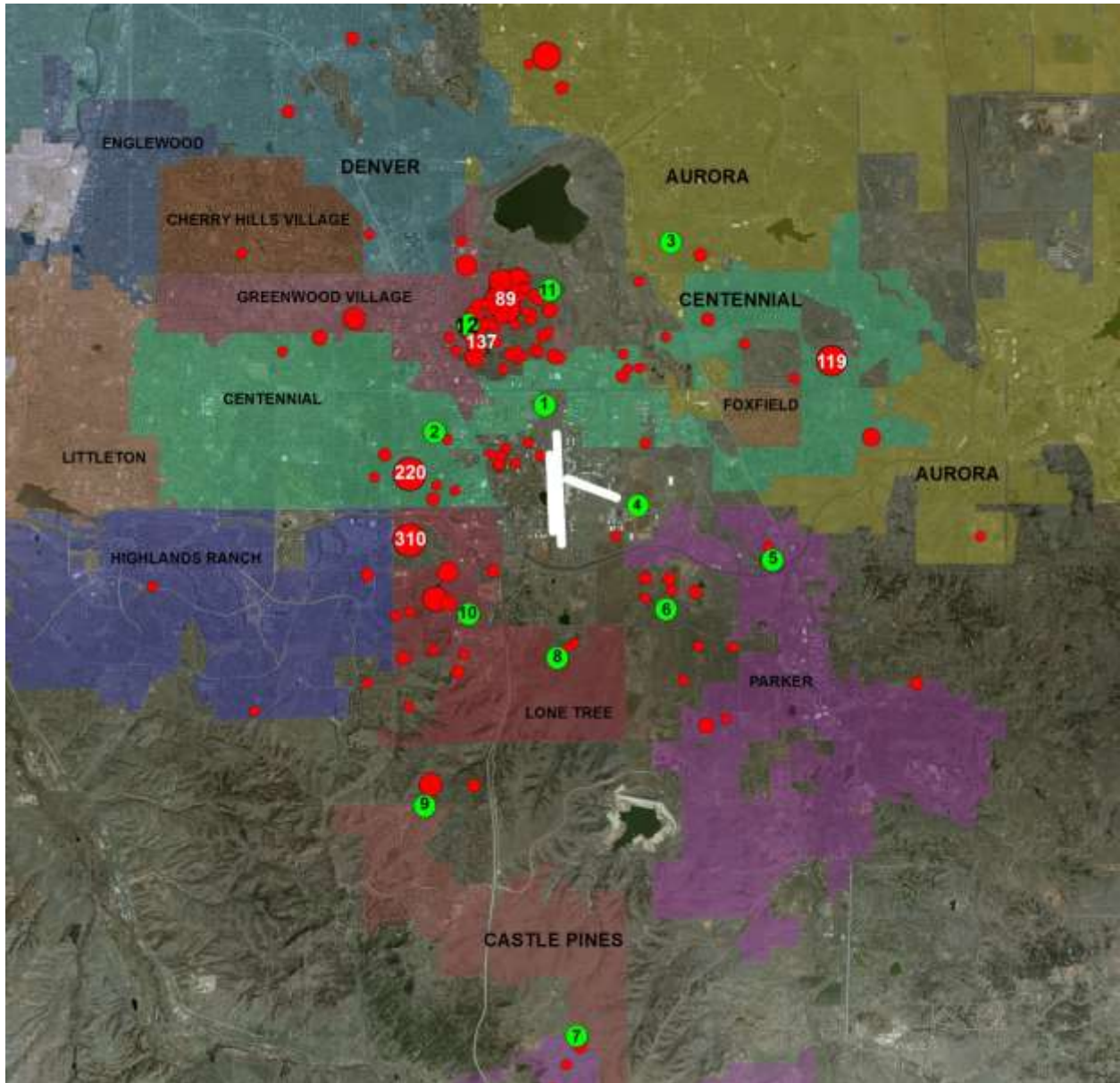
June, 2015 Complaints

Green = Noise Monitor Locations

Red = Household Complaint Locations.

*Larger dots equate to more complaints for that particular household

*Current zoom level shows all complaints for the month of June, 2015



June, 2015 YTD Complaints

MAP LEGEND:

Green = Noise Monitor Locations

Red = Household Complaint Locations.

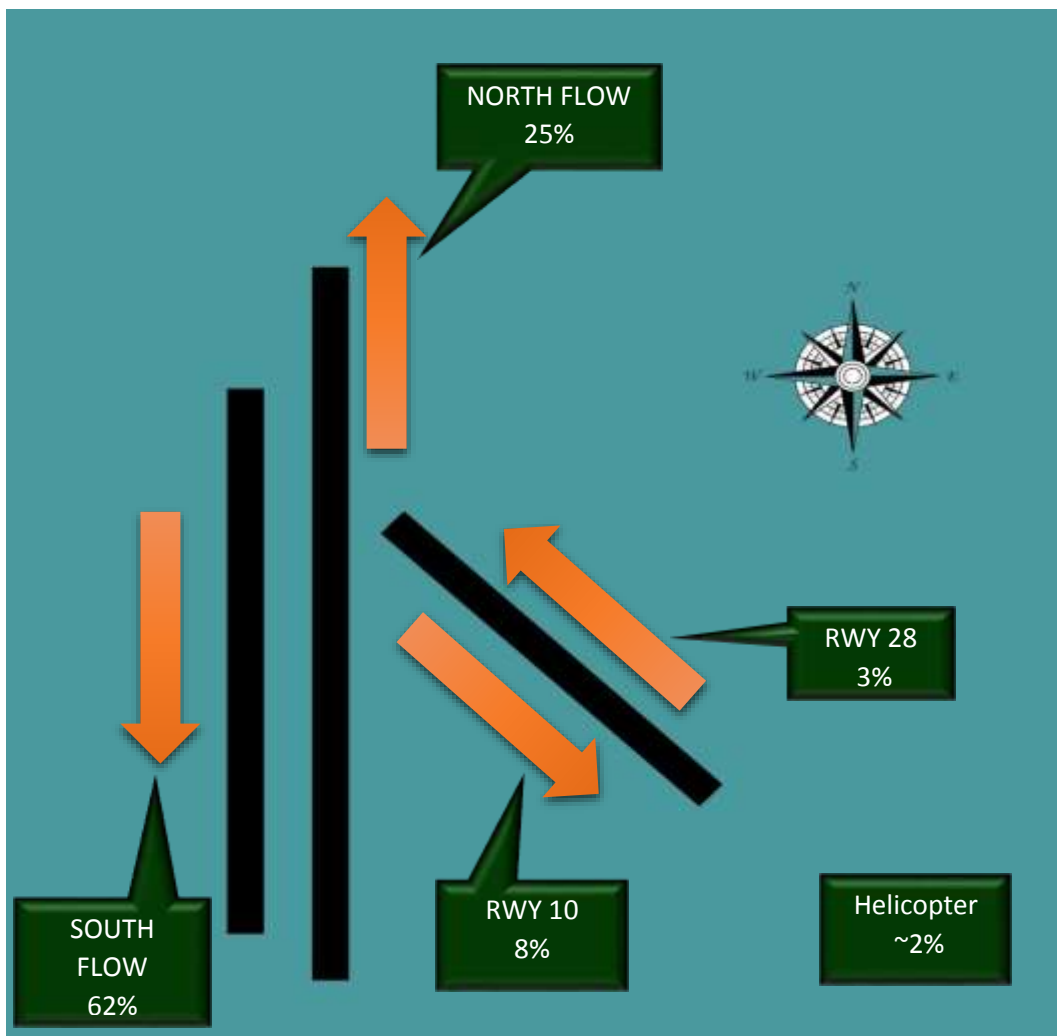
*Larger dots equate to more complaints for that particular household

*Current zoom level shows all complaints for the month of June, 2015

6 RUNWAY USAGE STATISTICS

The following picture and diagrams illustrate the traffic flows for the given time period. "Flow" indicates the average direction of traffic for the given time period. Flows are dictated by wind direction at any given time as aircraft have to land and take-off into the wind.

On a general basis Centennial Airport is in the South Flow configuration 54% of the time overall. When the weather is poor, Centennial Airport is usually in the North Flow configuration. As an example, if the Airport is in North flow configuration, aircraft will be generally departing to the north over Arapahoe County and arriving from the South over Douglas County. This is the exact opposite for South Flow. About, 12% of our overall traffic either arrives or departs on our East/West Runway 10/28.



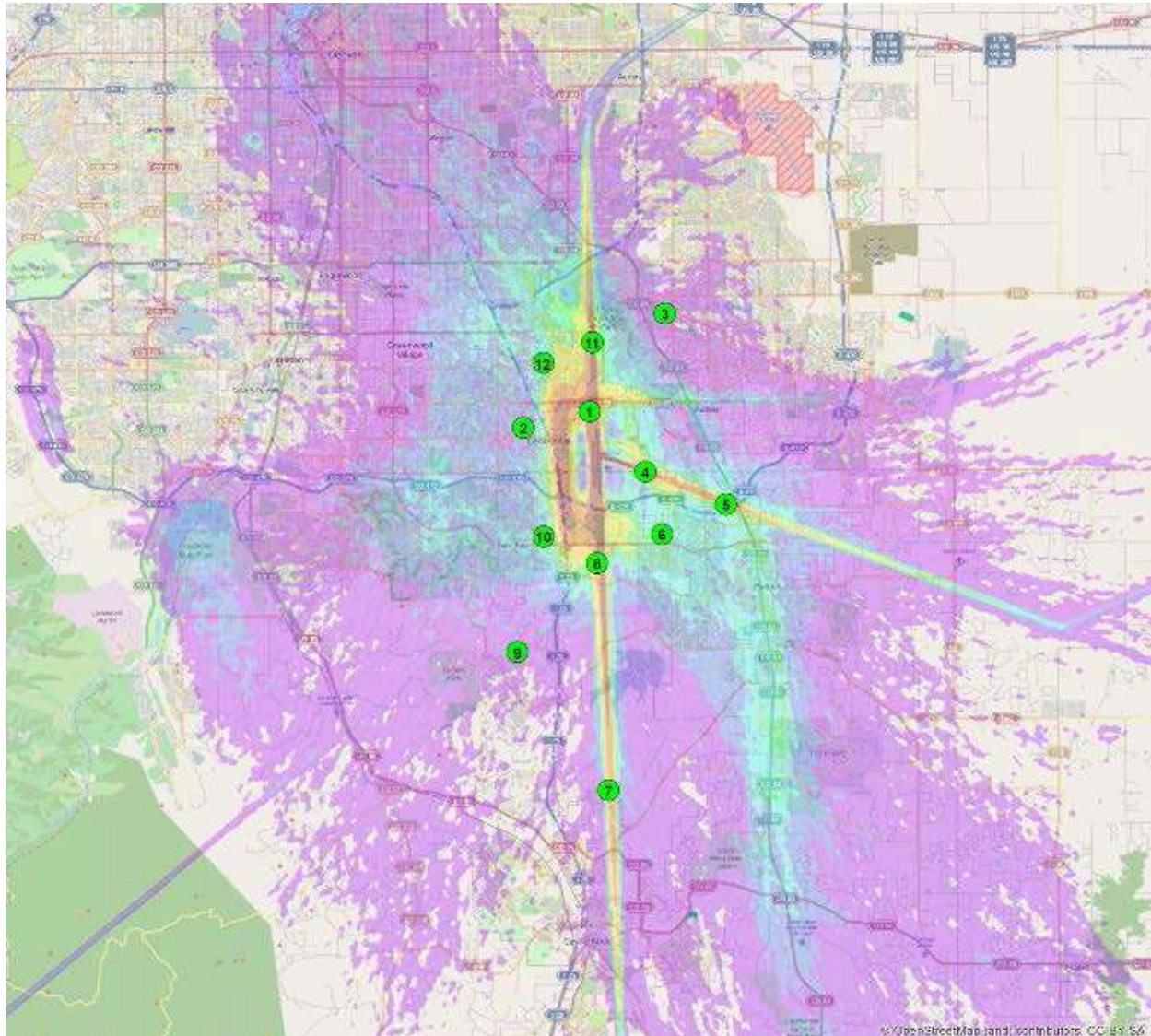
7 OPERATIONS STATISTICS

	IFR ITINERANT				VFR ININERANT				LOCAL		
	AIR TAXI	G.A.	MILITARY	TOTAL INTINERANT	AIR TAXI	G.A.	MILITARY	TOTAL	G.A.	MILITARY	TOTAL LOCAL
January	1,934	3,297	119	5,350	225	5,916	158	6,299	9,970	270	10,240
February	1,902	2,892	105	4,899	179	5,415	124	5,718	9,471	364	9,835
March	2,061	3,422	121	5,604	390	8,425	149	8,964	13,735	172	13,907
April	1,788	3,186	137	5,111	201	6,746	227	7,174	10,616	315	10,931
May	1,854	3,454	114	5,422	172	5,725	133	6,030	10,568	140	10,708
June	2,098	3,646	184	5,928	319	8,681	193	9,193	15,012	355	15,367
July								0			0
August				0				0			0
September				0				0			0
October				0				0			0
November				0				0			0
December				0				0			0
Y-T-D Totals	11,637	19,897	780	32,314	1,486	40,908	984	43,378	69,372	1,616	70,988

	IFR OVERFLIGHTS				VFR OVERFLIGHTS				TOTAL OPERATIONS	
	AIR TAXI	G.A.	MILITARY	TOTAL INTINERANT	AIR TAXI	G.A.	MILITARY	TOTAL		
January	3	2	2	7	148	486	26	660	January	22,556
February	1	15	2	18	96	448	31	575	February	21,045
March	4	1	3	8	279	367	27	673	March	29,156
April	0	3	6	9	159	263	28	450	April	23,675
May	2	3	8	13	123	428	60	611	May	22,784
June	8	0	2	10	154	538	33	725	June	31,223
July				0				0	July	
August				0				0	August	
September				0				0	September	
October				0				0	October	
November				0				0	November	
December				0				0	December	
Y-T-D Totals	18	24	23	65	959	2,530	205	3,694	Y-T-D Totals	150,439

8 RADAR TRACK DENSITY MAP

The following map takes all of the flight track data for the given time period and creates a line density plot. This enables everyone to have a better understanding of where the flight tracks are at, while allowing for historical comparisons. Dark red in the middle of the picture shows the highest density of flight tracks over the runways. The colors gradually move out to pink as the least dense.



April, 2015 Flight Tracks into Centennial Airport.

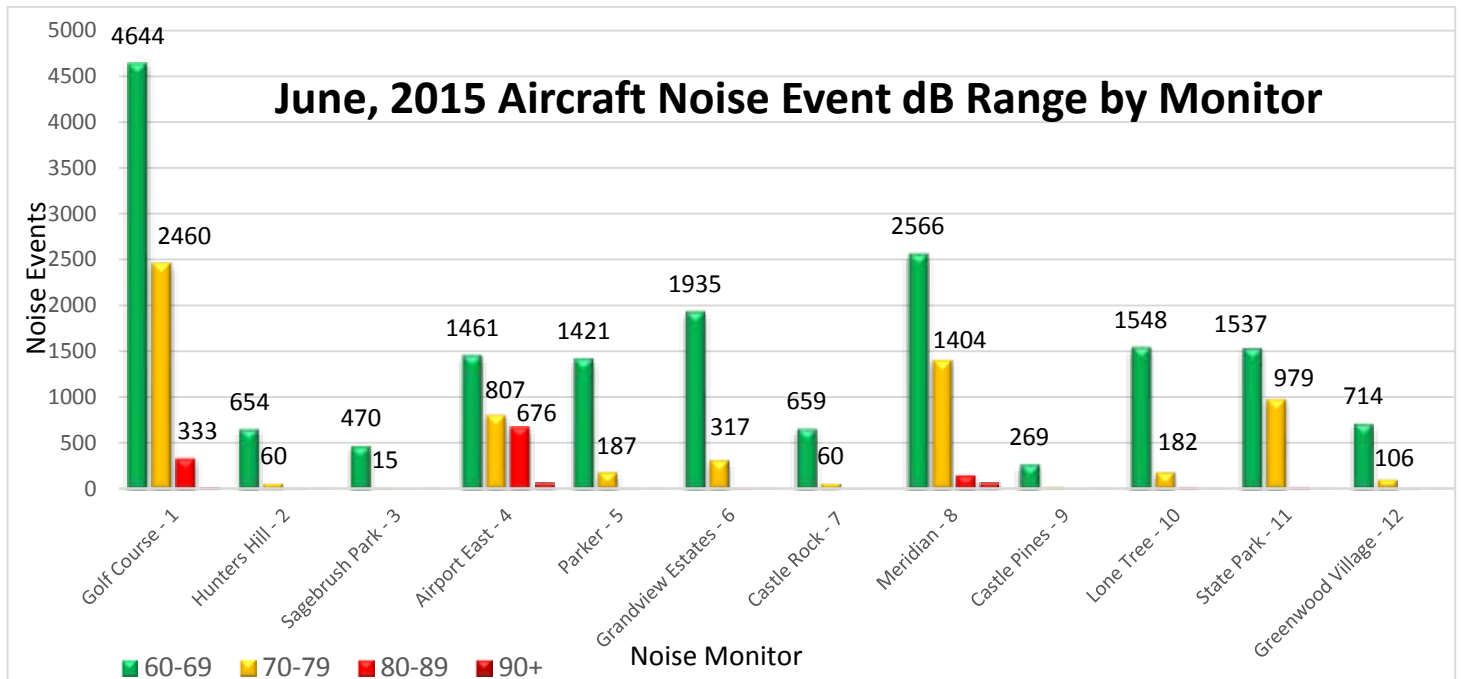
9 NOISE MONITOR REPORTS

The following data displays the amount and associated decibel level of aircraft noise events at a given monitor. An aircraft noise event must contain the following characteristics:

First, the noise event must exceed the ambient noise level. This number varies at every monitor, but is generally greater than 50-55db. Secondly, the noise event must last longer than 5 seconds. Lastly, using radar data, the system must correlate an aircraft with the noise event. This ensures that the sound is not associated with a 'community noise event' such as a lawn mowers or emergency sirens.

The information below reflects only aircraft noise events as described above.

June, 2015 Aircraft Noise Event Decibel Range By Monitor				
Monitor	60-69	70-79	80-89	90+
Golf Course - 1	4644	2460	333	14
Hunters Hill - 2	654	60	8	1
Sagebrush Park - 3	470	15	1	1
Airport East - 4	1461	807	676	60
Parker - 5	1421	187	9	1
Grandview Estates - 6	1935	317	12	3
Castle Rock - 7	659	60	3	0
Meridian - 8	2566	1404	150	62
Castle Pines - 9	269	23	1	1
Lone Tree - 10	1548	182	18	1
State Park - 11	1537	979	19	3
Greenwood Village - 12	714	106	7	1



10 NOTES AND DISCLAIMER

This report is for informational use only. Every effort has been made to ensure the accuracy of this data; however, the material may be altered as new information is added or updated in the system.

Centennial Airport disclaims any responsibility or liability for any direct or indirect damages resulting from the use of this data. We hope this information provides you with a valuable tool in which to review noise data and characteristics in your area. If you have questions or concerns, please contact the Centennial Airport Noise office at **303-790-0598**.